

Auf in dem besondern offentl. wem
 dem Namen II. glückl. Nr. und fließt
 das Eisen mit diesen Platten
 Anzeige über eingegangene
 Sendungen
 Düsseldorf-Heerdt, den 191
 Firma Schmer-Baum
 in
 sandte laut Frachtbrief vom 10. d. M. in dem
 gepackten Eisen mit diesen Platten
 in das Eisen gepackte, denn mit
 diesen in einem Frachtbriefe
 gebracht und dem Frachtbriefe
 dieses einen der Eisen mit diesen Platten
 und dem Frachtbriefe
 gegen diese Platten in einem
 Frachtbriefe in dem Frachtbriefe
 Fracht darauf: erfolgt mit Frachtbriefe.
 Bestell No. 1000
 Com. No. 1000
 für Rechnung der Fa. Schmer-Baum
 abgeliefert an Schmer-Baum
 Quittung des Empfängers. 10-15 Minuten
 ist das Eisen mit diesen Platten
 an dem Frachtbriefe
 in dem Frachtbriefe

An Abtlg. II. Nr. 191
Anzeige über eingegang. Sendungen.

Düsseldorf-Heerdt, den 191
 Firma Schmer-Baum
 in
 sandte laut Frachtbrief vom 10. d. M. in dem
 gepackten Eisen mit diesen Platten
 in das Eisen gepackte, denn mit
 diesen in einem Frachtbriefe
 gebracht und dem Frachtbriefe
 dieses einen der Eisen mit diesen Platten
 und dem Frachtbriefe
 gegen diese Platten in einem
 Frachtbriefe in dem Frachtbriefe
 Fracht darauf: erfolgt mit Frachtbriefe.
 Bestell No. 1000
 Com. No. 1000
 für Rechnung der Fa. Schmer-Baum
 abgeliefert an Schmer-Baum
 Quittung des Empfängers. 10-15 Minuten
 ist das Eisen mit diesen Platten
 an dem Frachtbriefe
 in dem Frachtbriefe

Handwritten text, possibly a note or signature, partially obscured by a diagonal line.

191

Düsseldorf-Heerd, den

Firma

in

sende laut Fachbrief vom

Pracht darauf:

Bestell No.

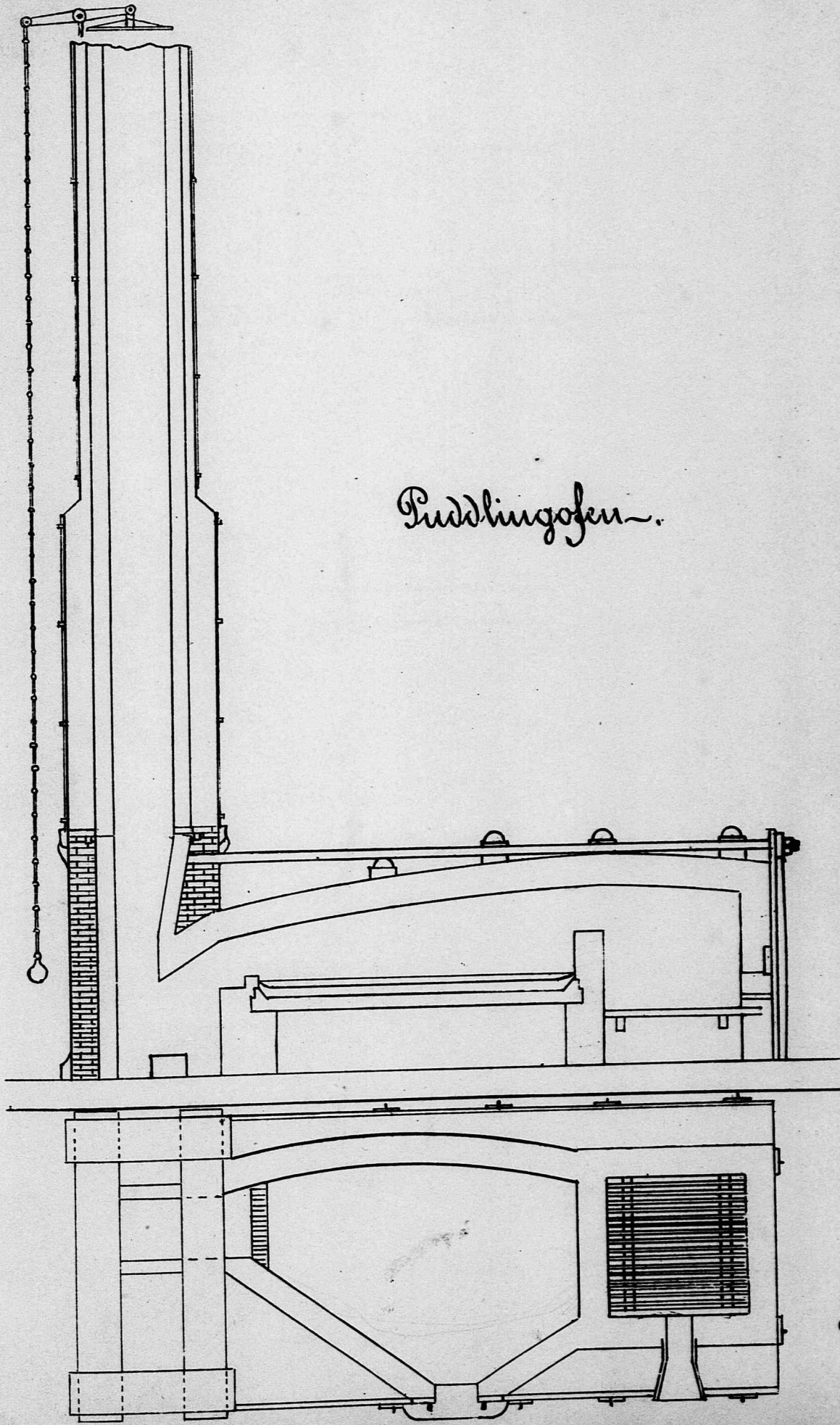
Com. No.

für Rechnung der Fa.

abgeleitet an

Quittung des Empfängers

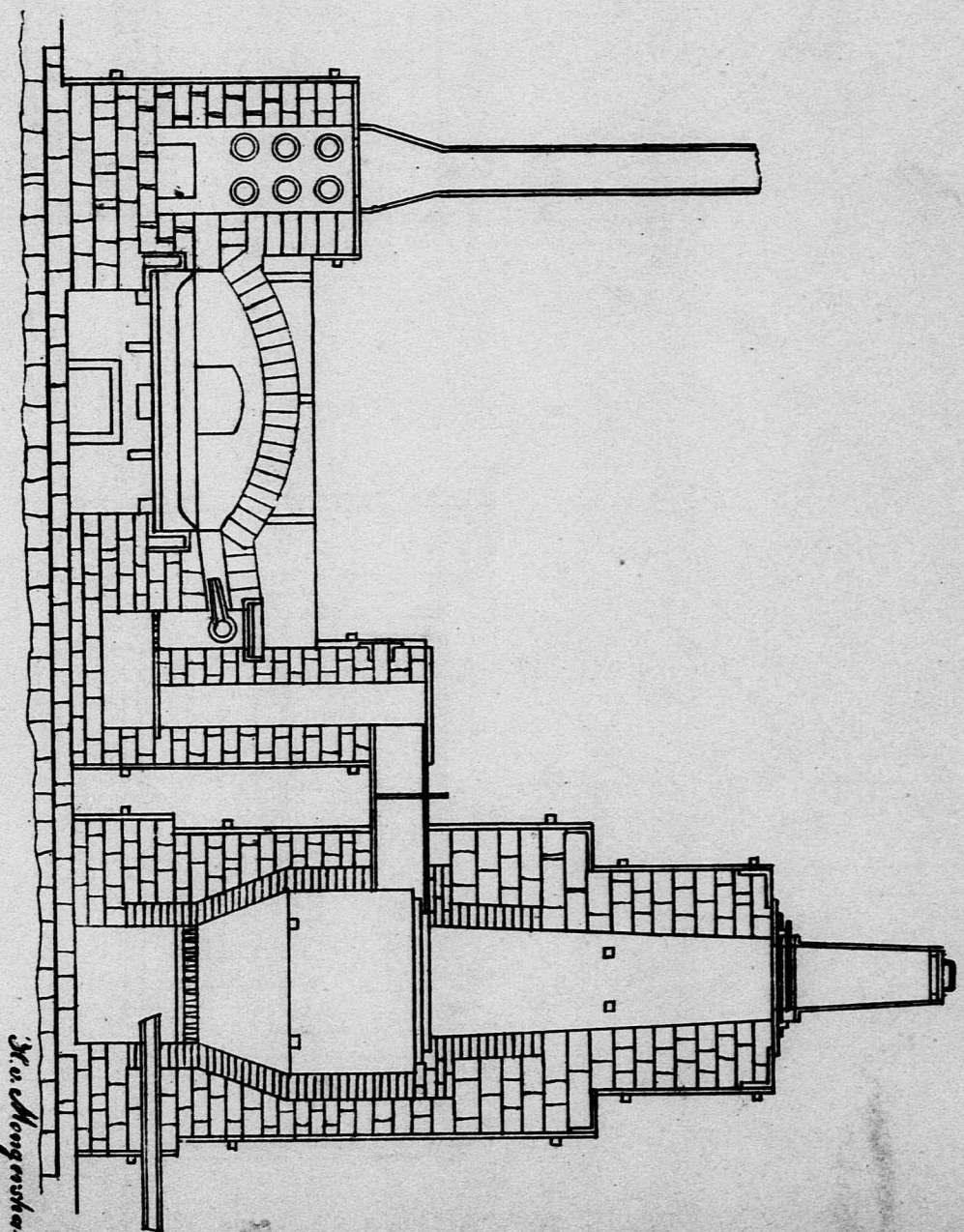
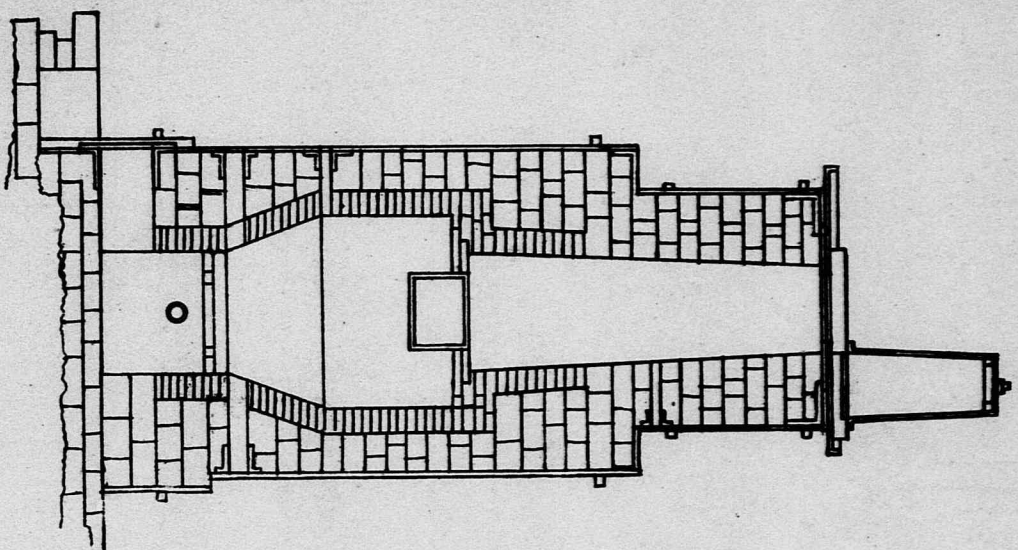
Handwritten signature or name.



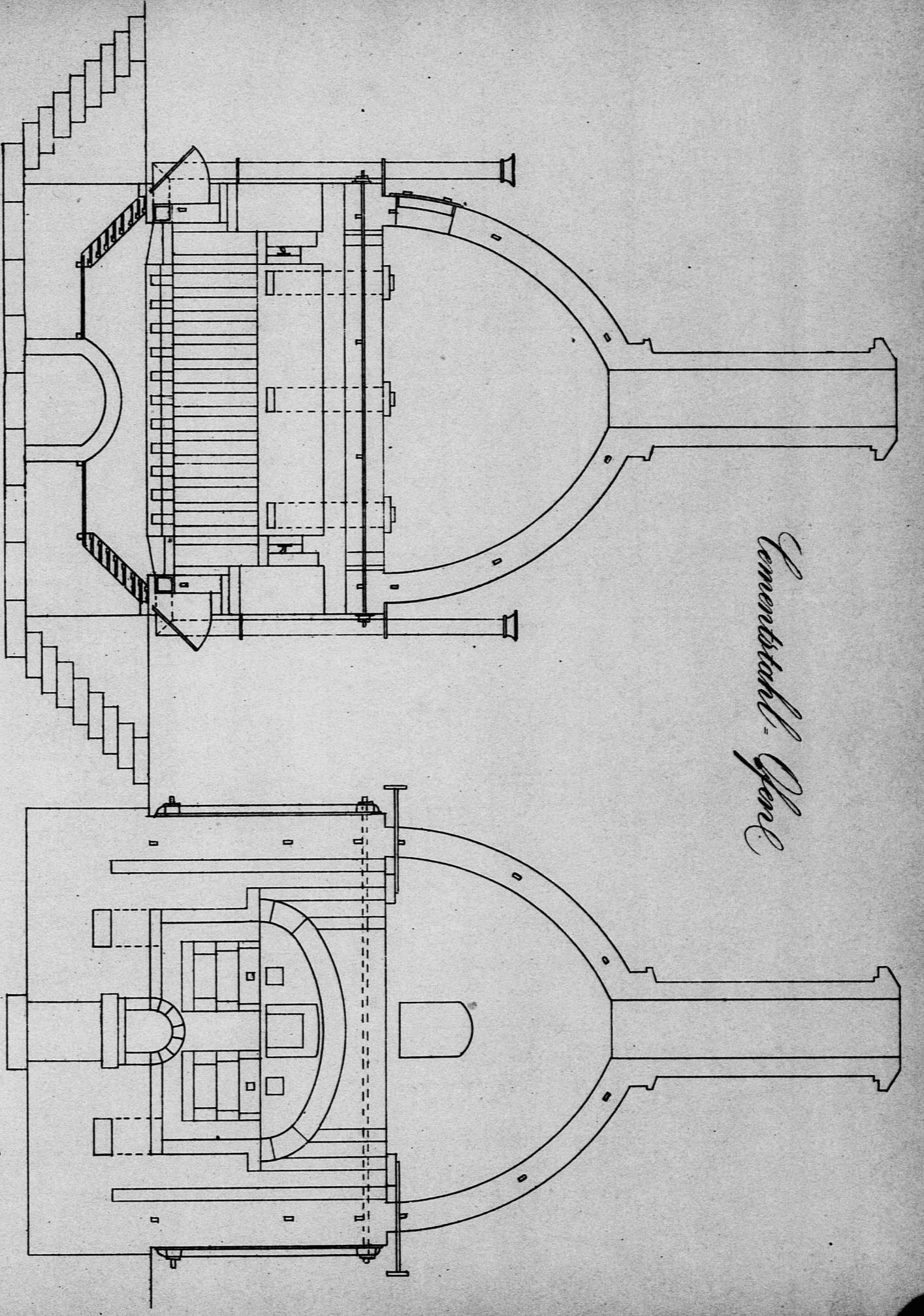
Puddlingofen.

Handwritten signature or name.

Spindelpfen mit Gasgeneratore

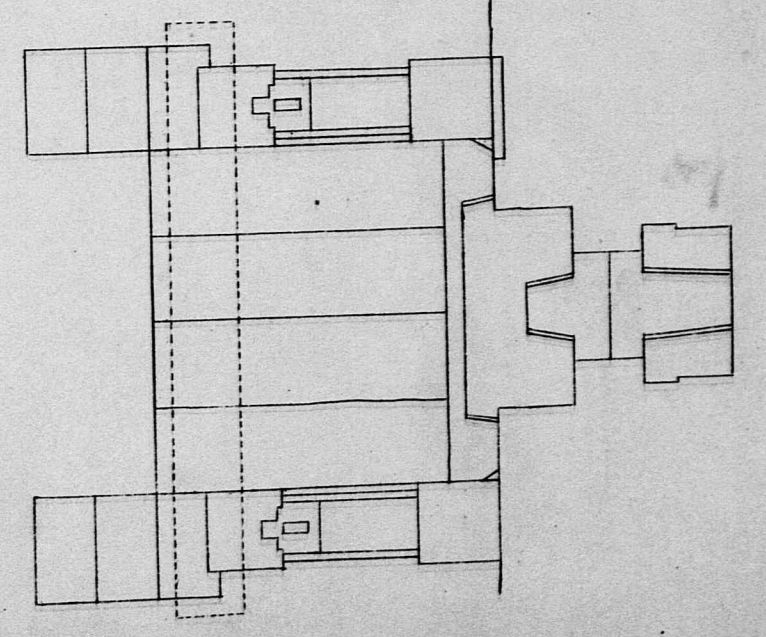
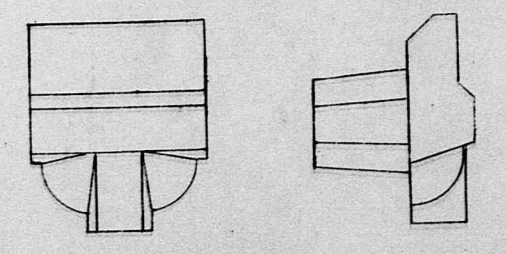
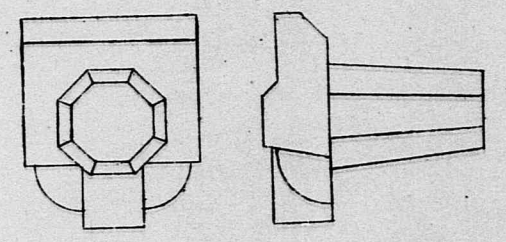
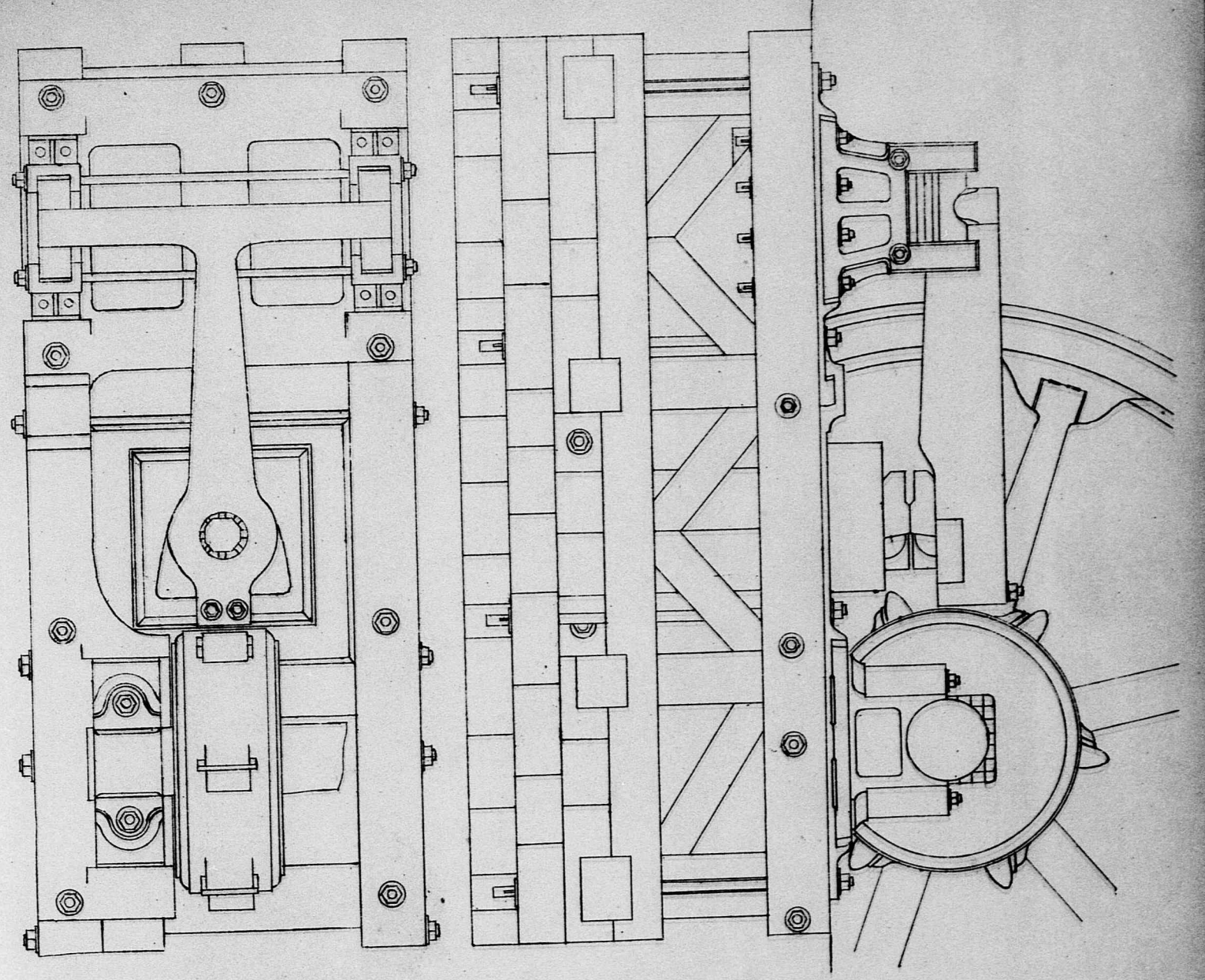


St. v. Schonguthausen.

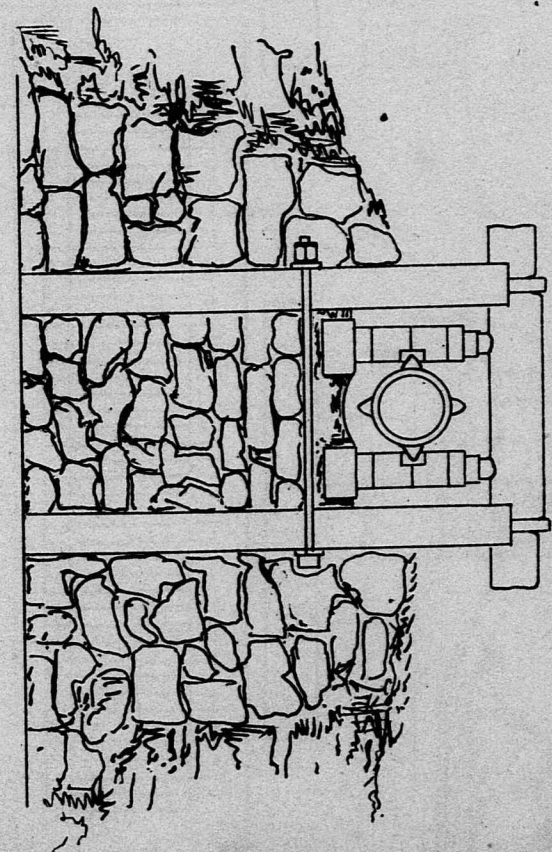
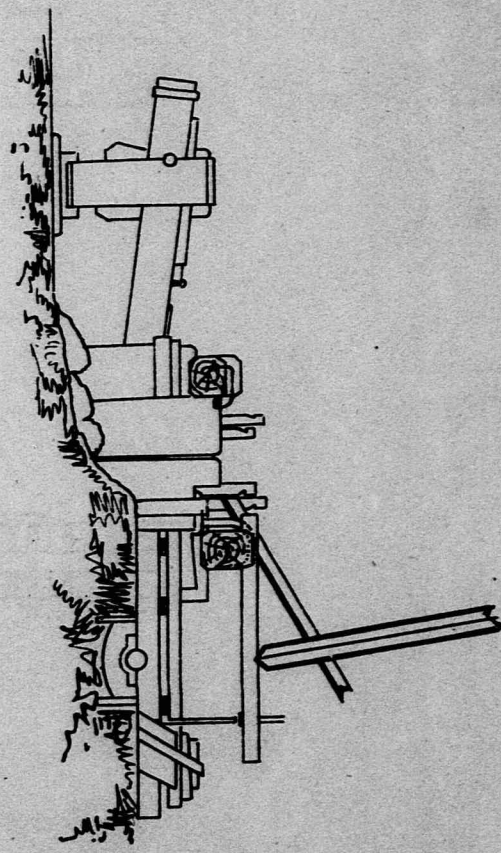
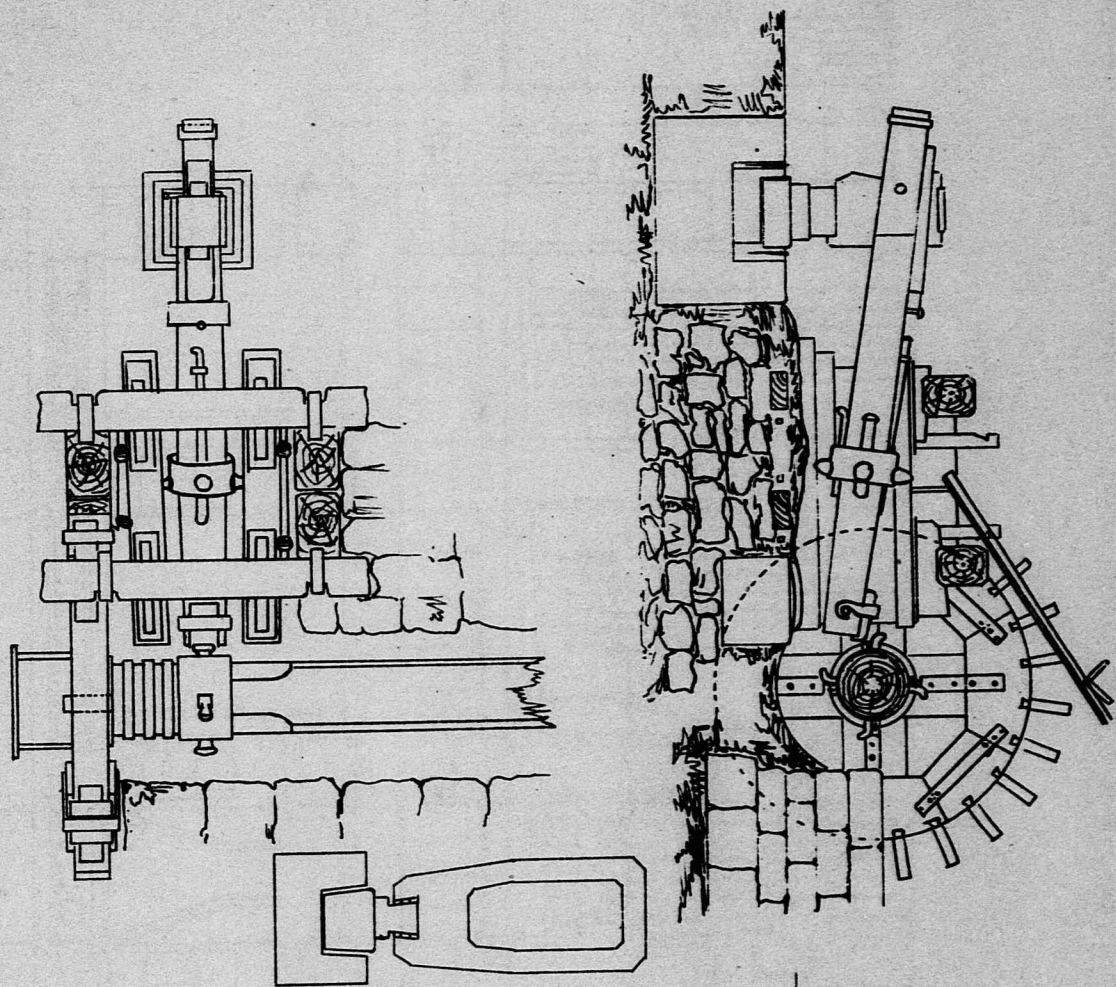


Leinwandstuhl - Spinn

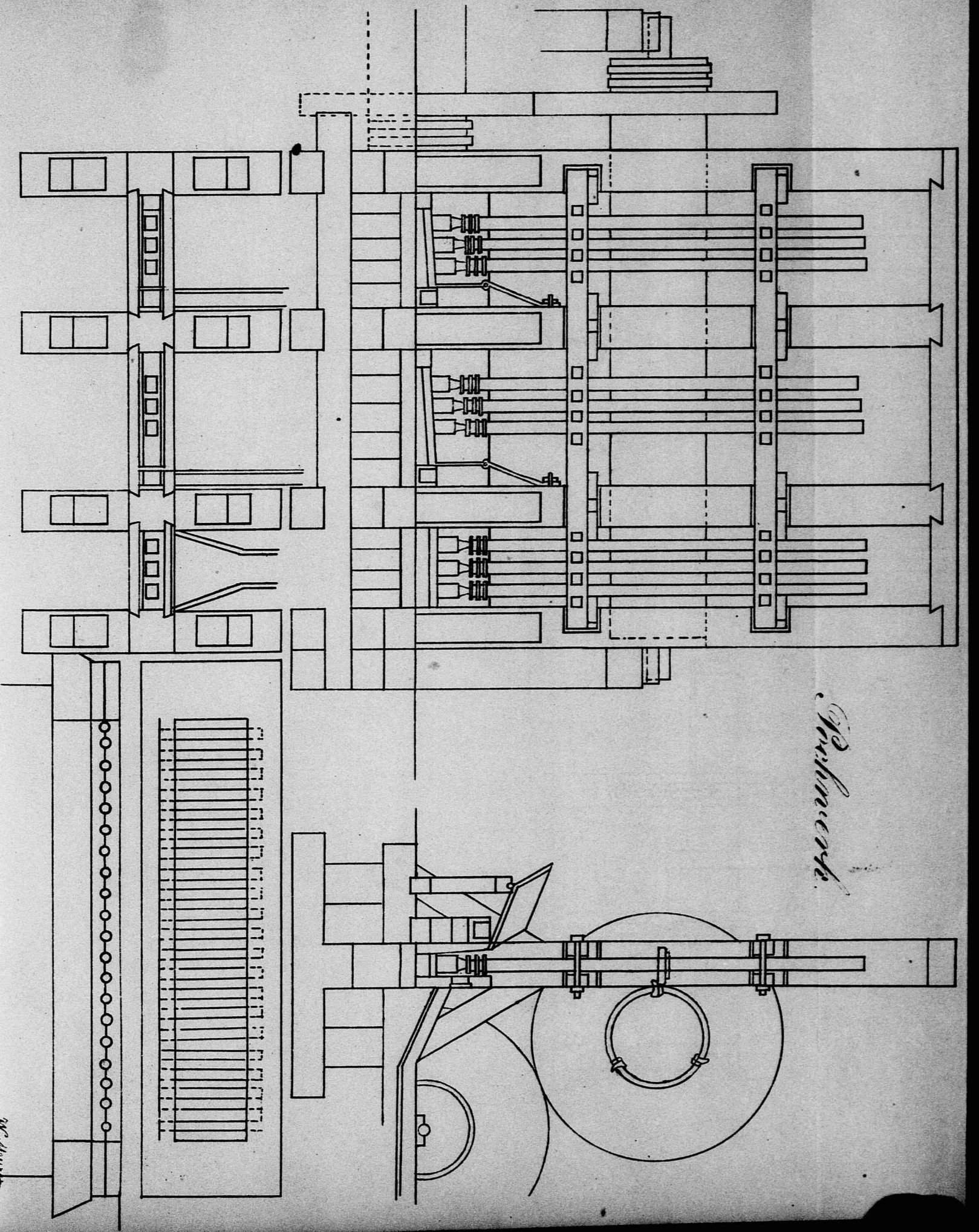
0. 8. 1844



2. 0/12mm



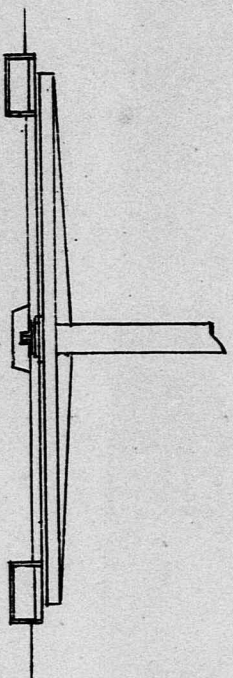
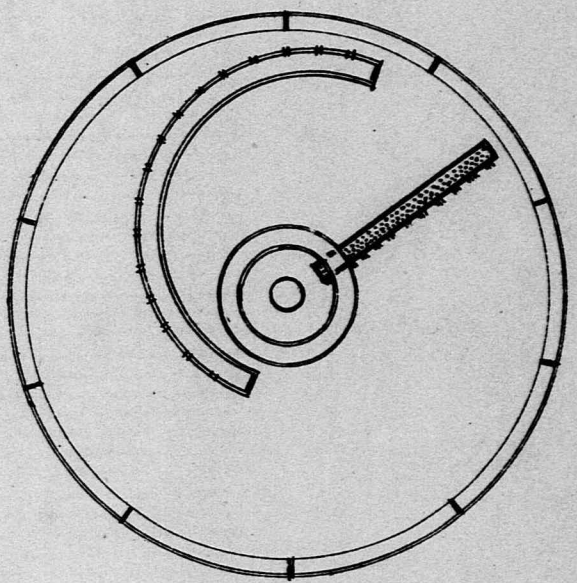
Mr. Stevens.



Shufeldt

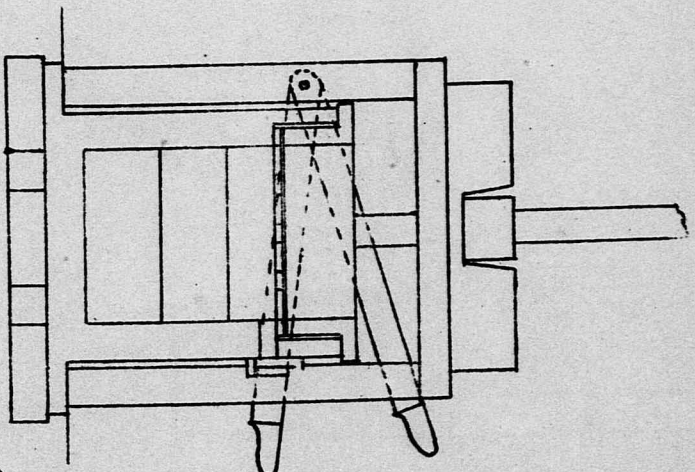
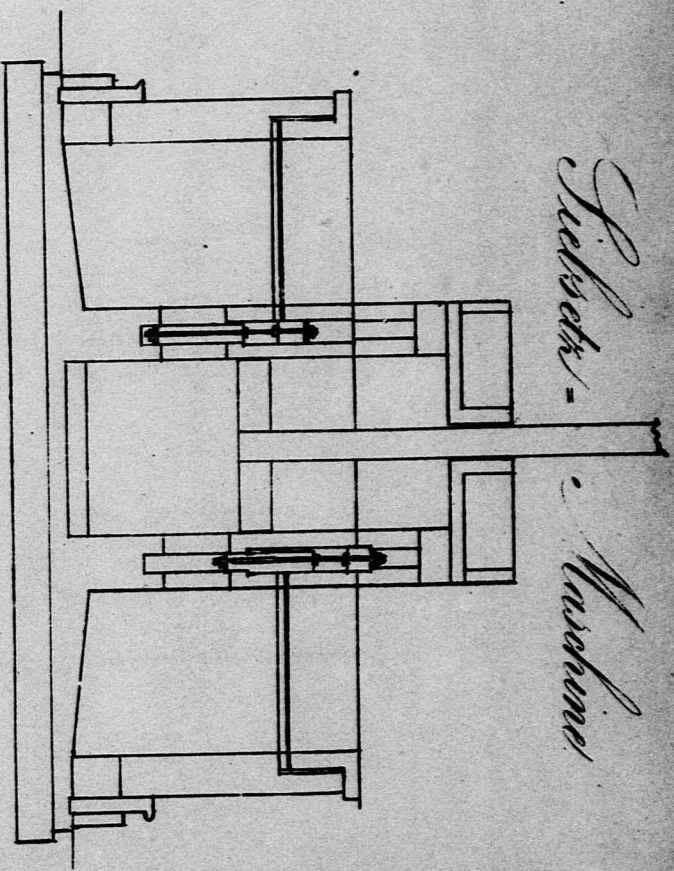
W. Shufeldt

Postwurden Hebel

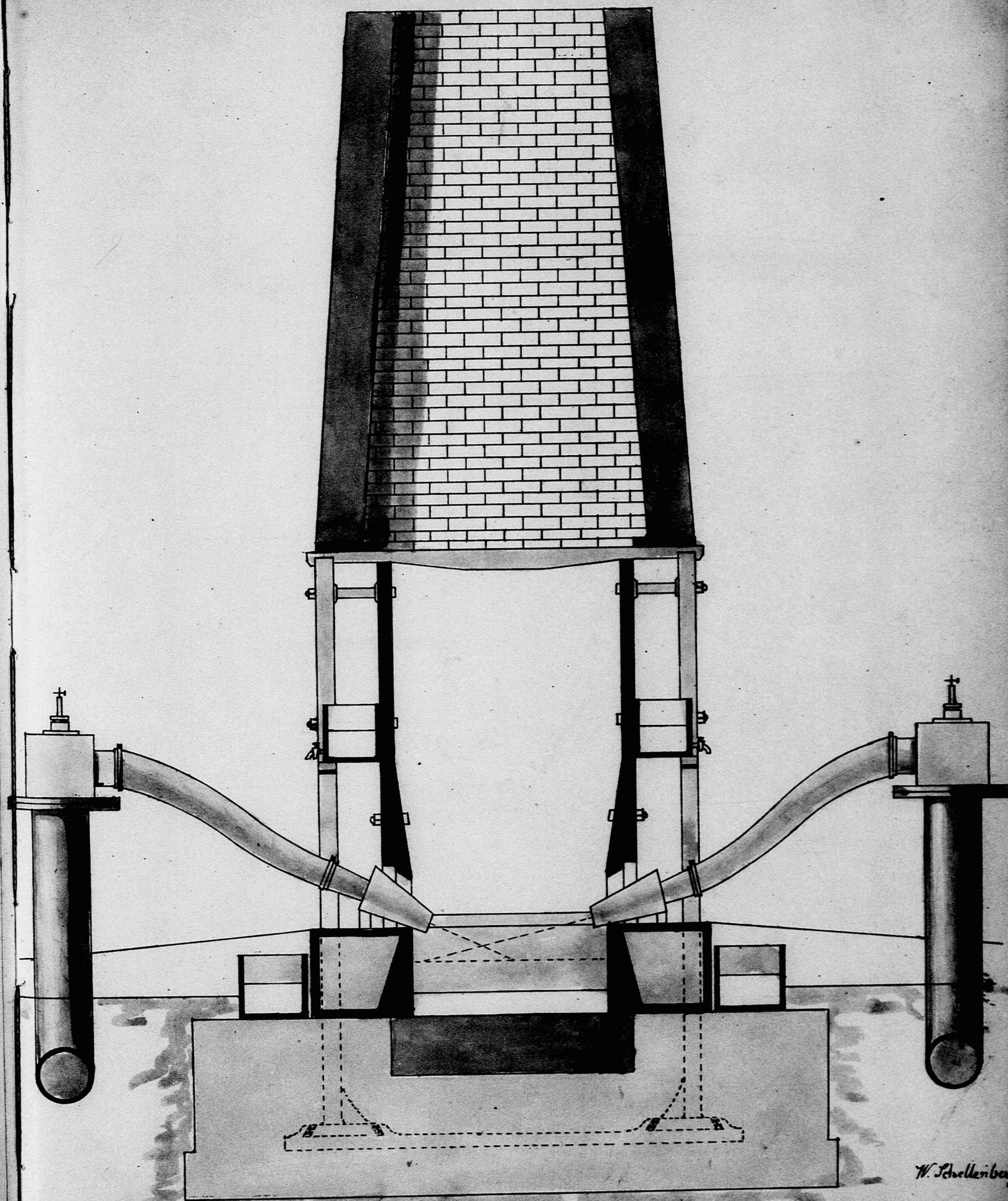


Siebstock

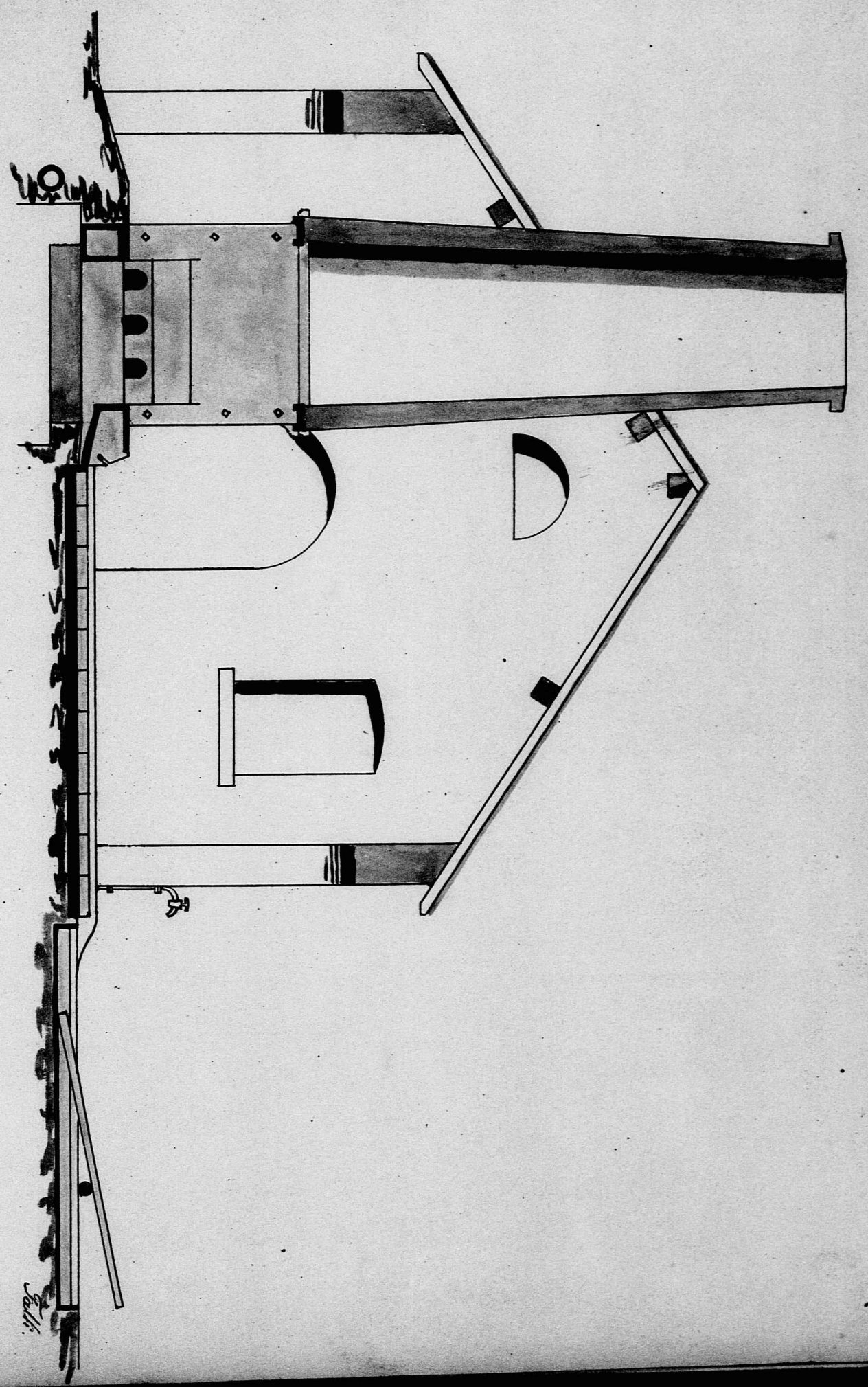
Maschine



Schumann

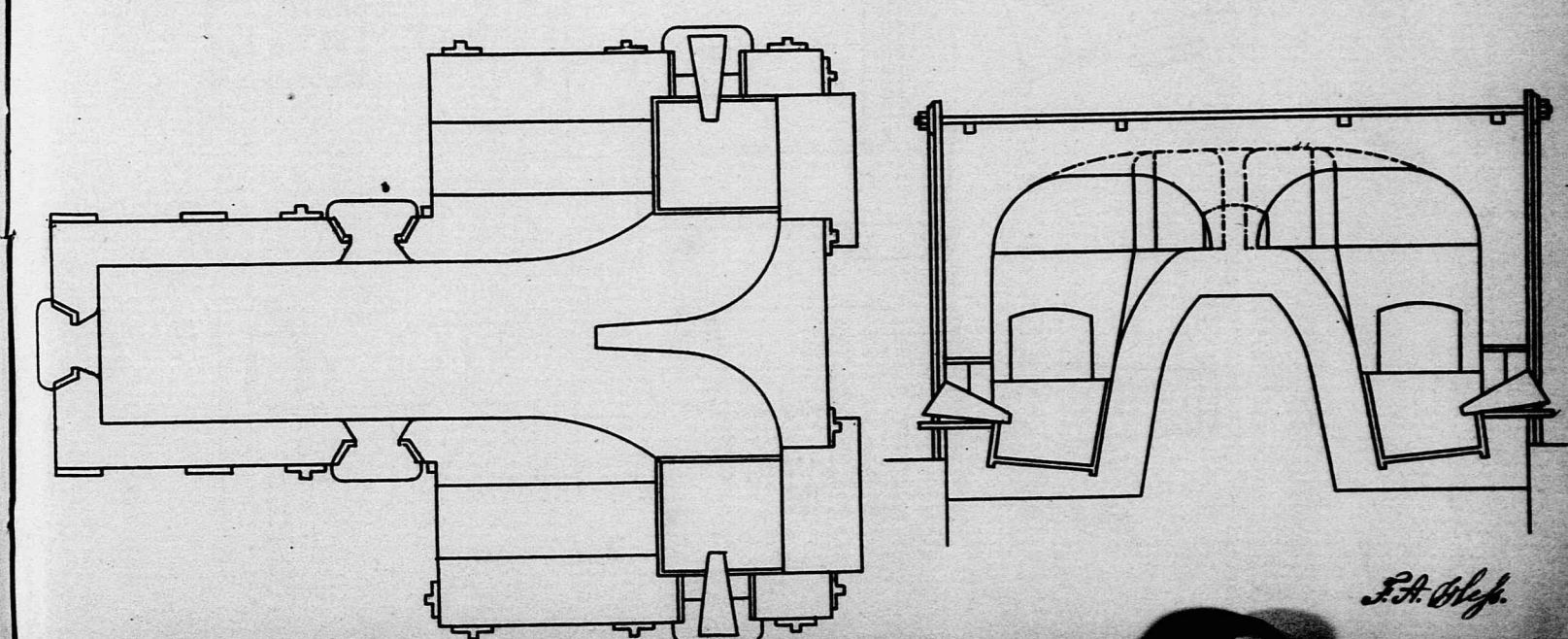
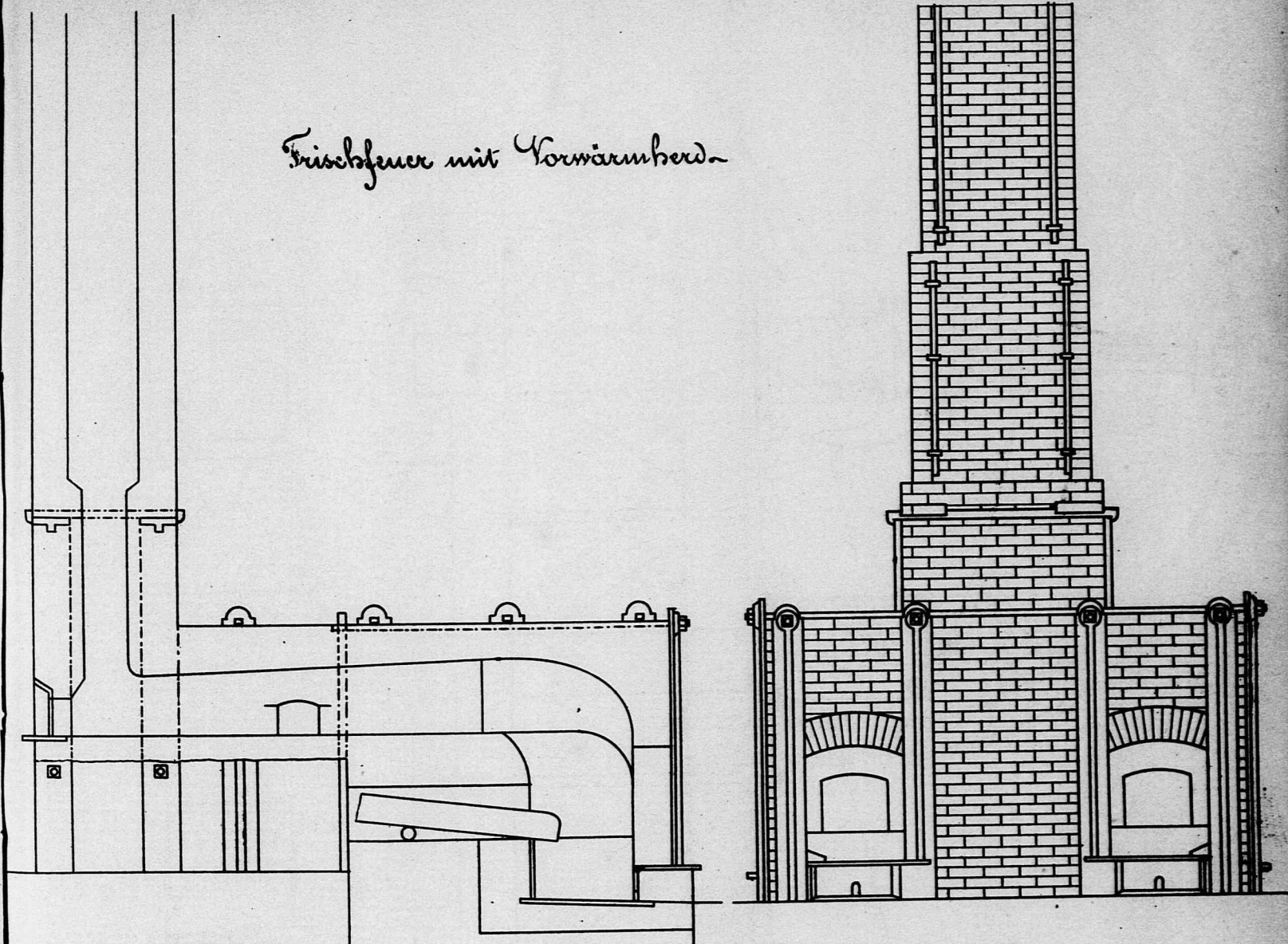


W. Schellenberg

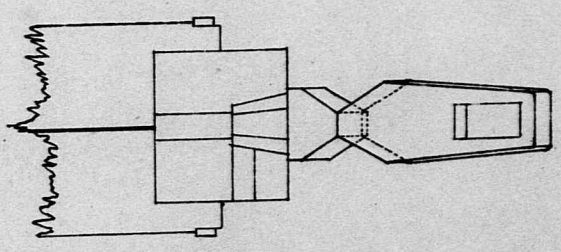
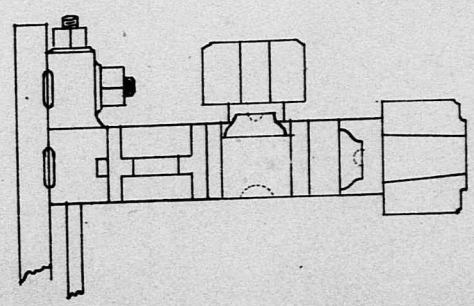
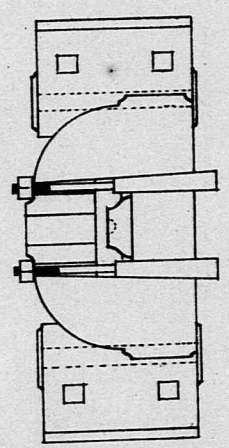
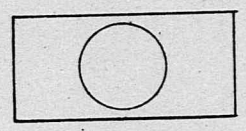
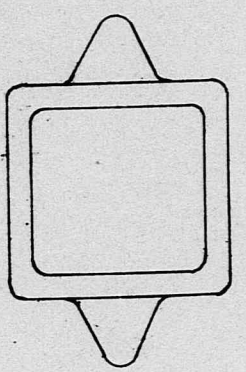
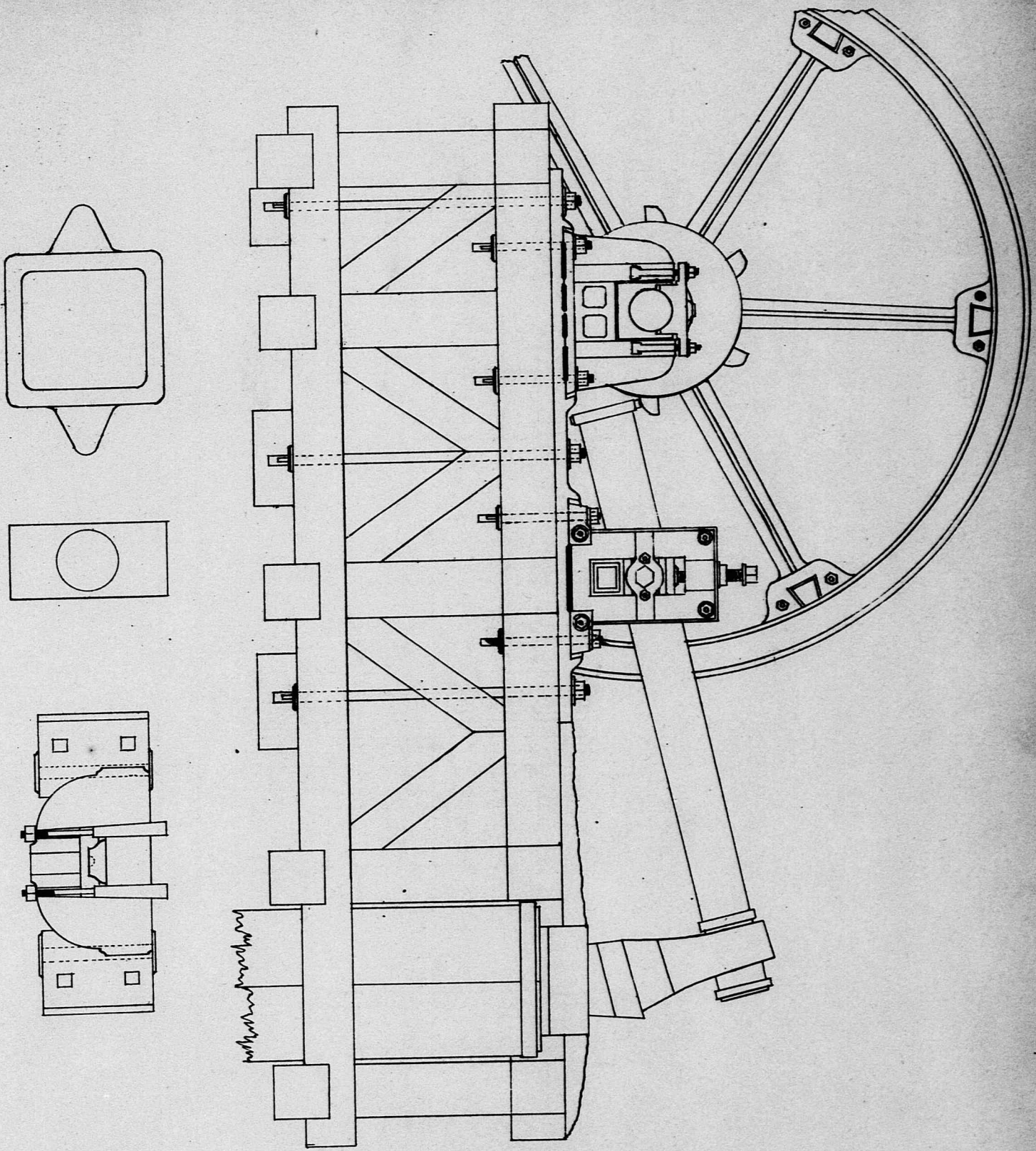


Call.

Frühfeuer mit Vorwärmer

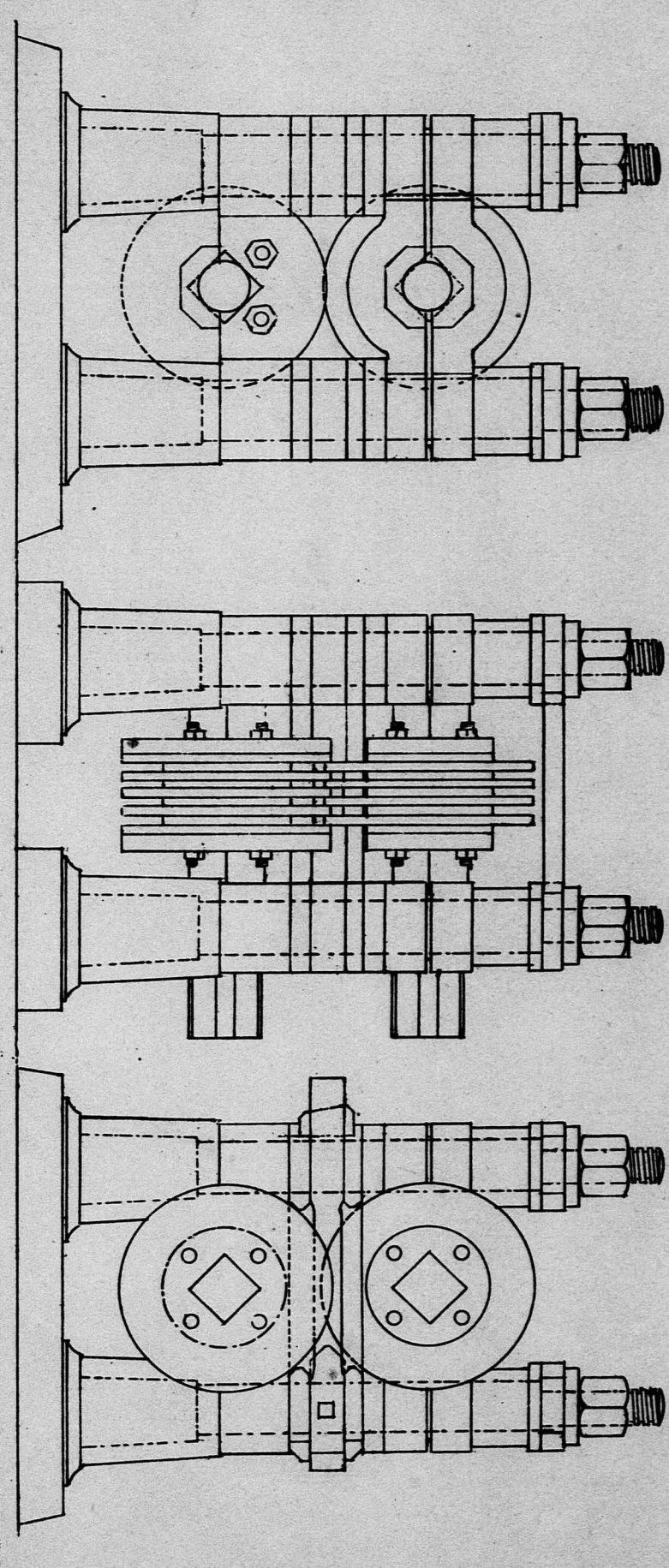


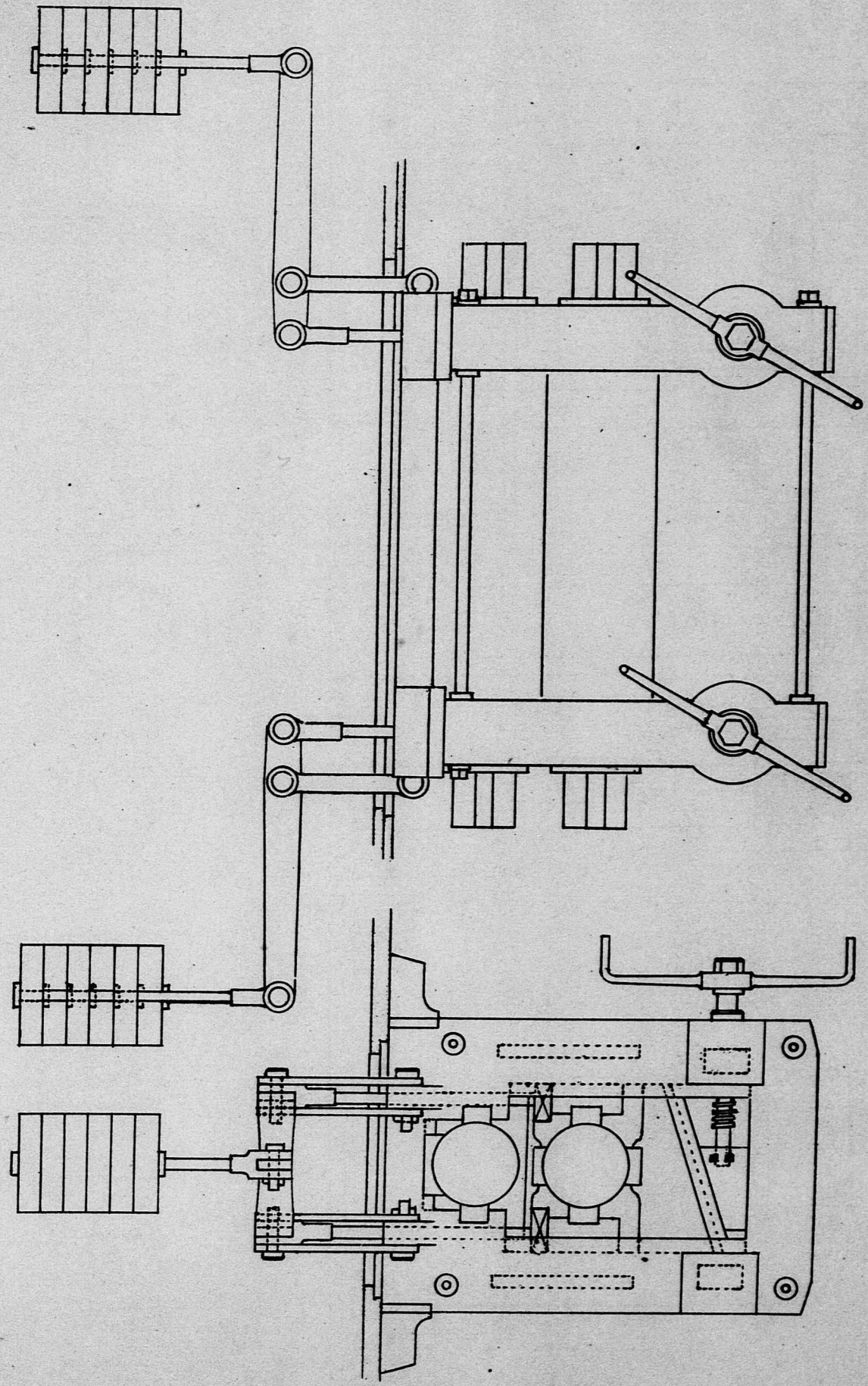
F. A. Glep.



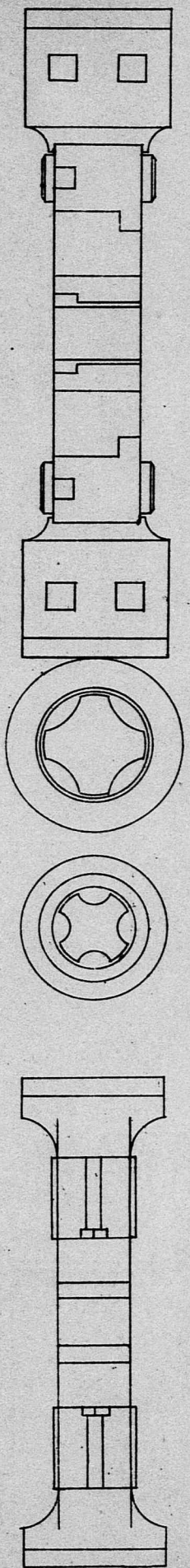
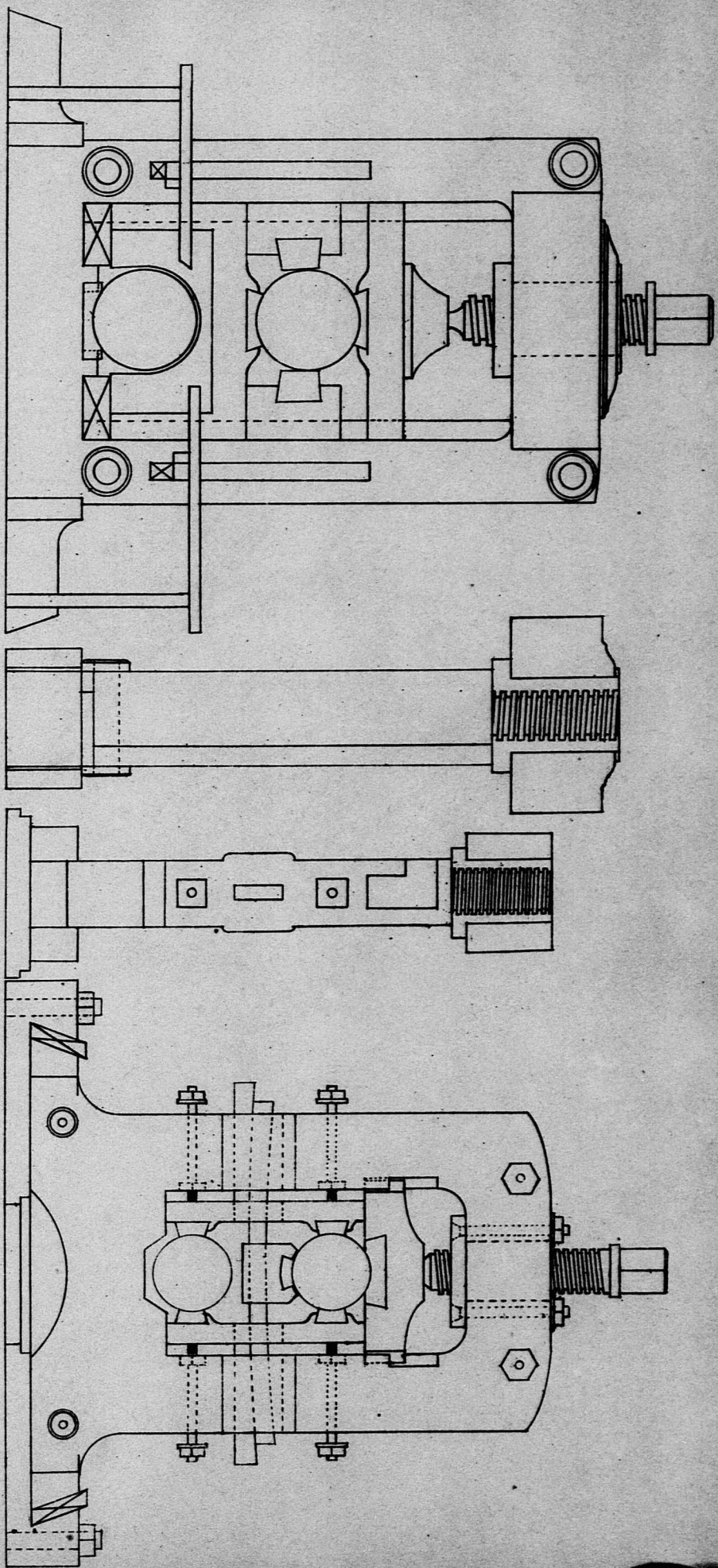
C. Hellmann.

Dr. 1000.

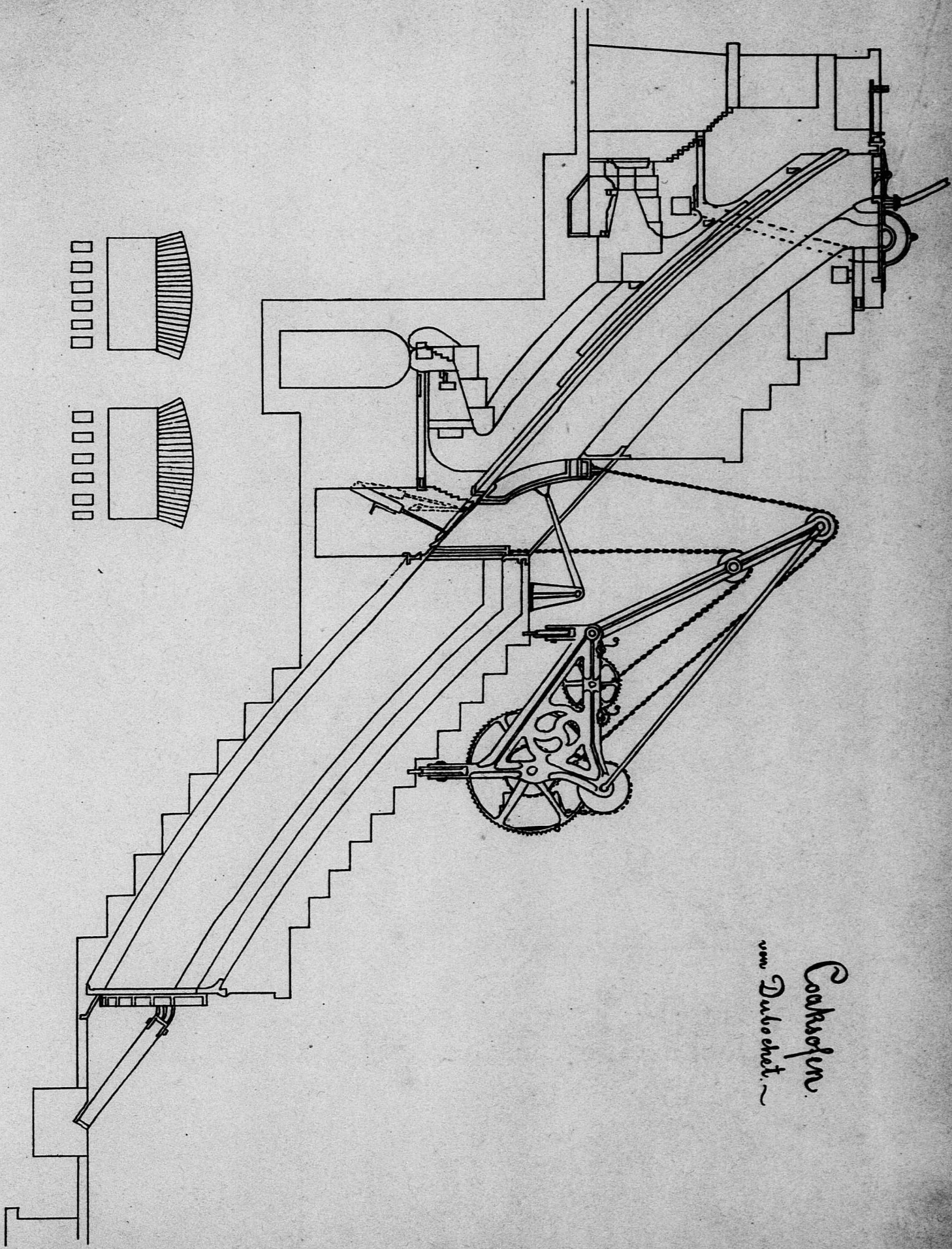




Staphenberger

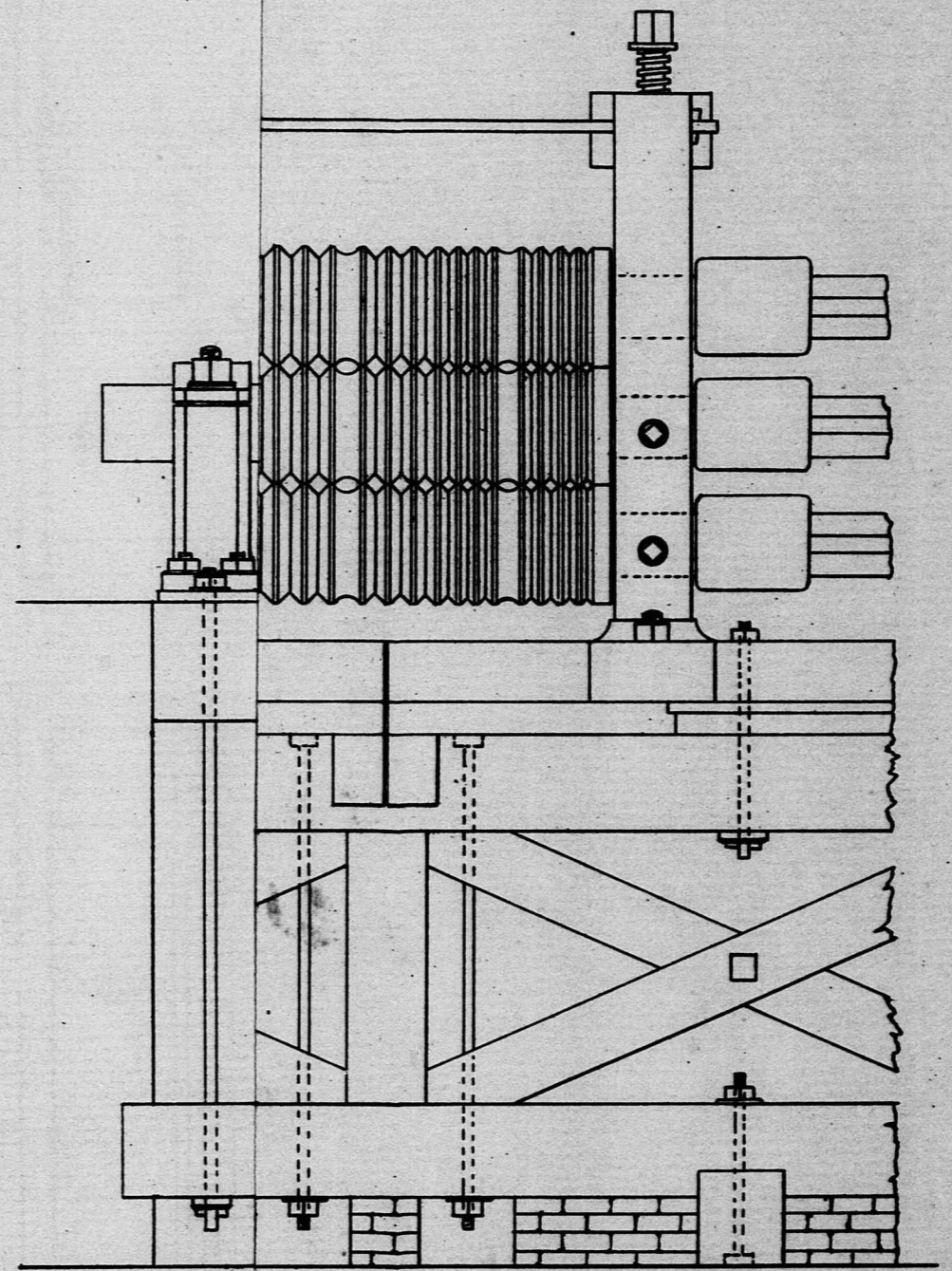


S. Schum 24

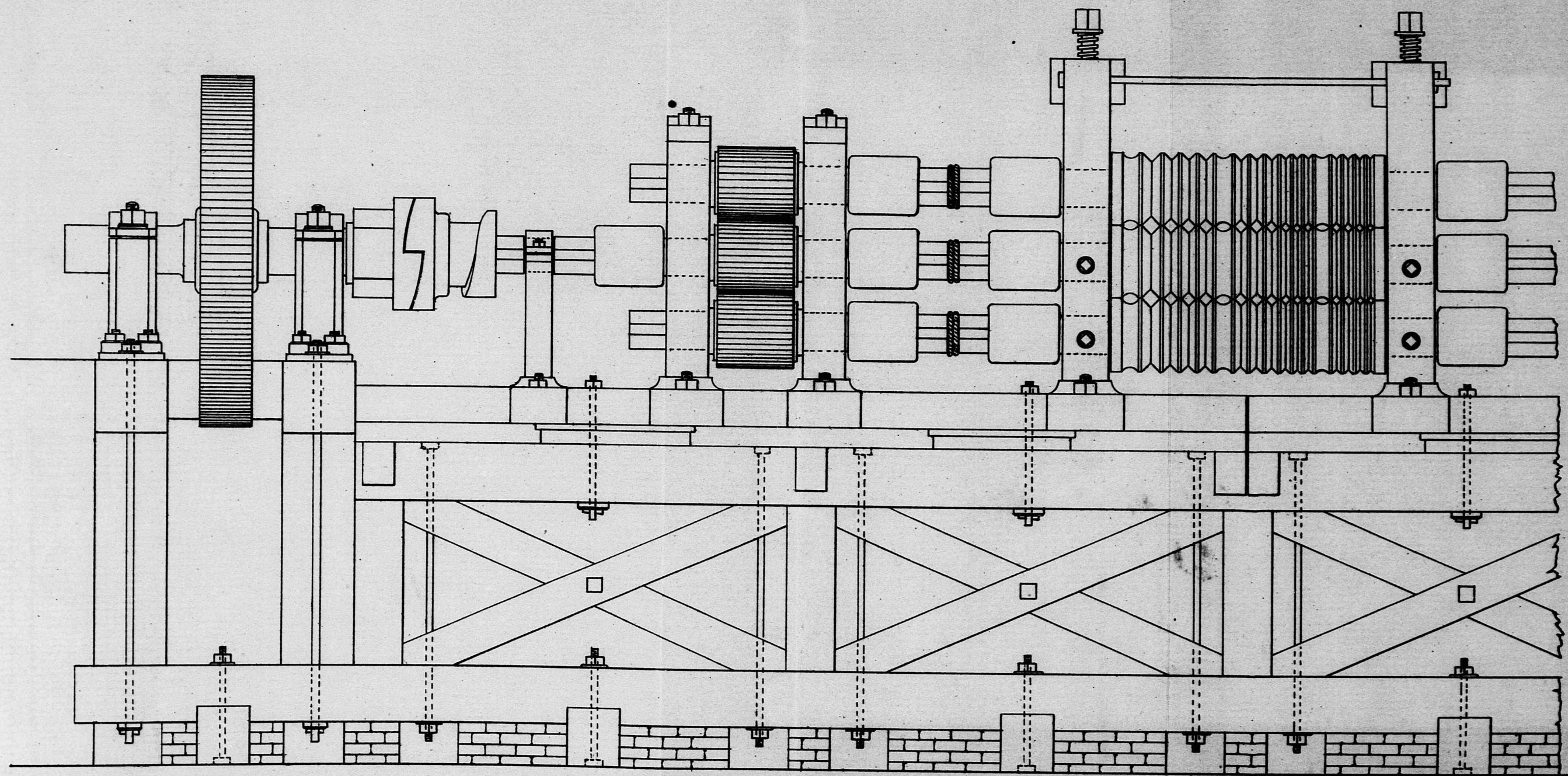


*Cochran's
new Turbo shot.*

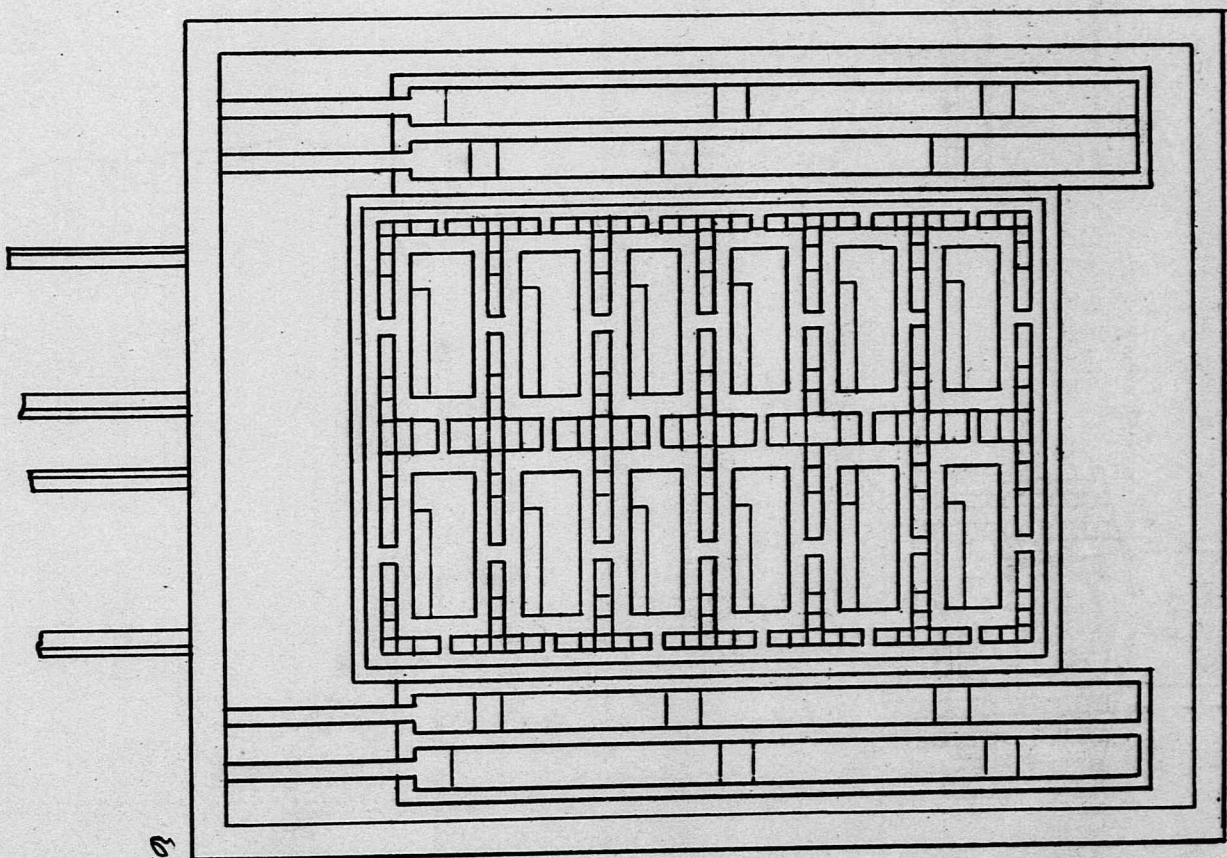
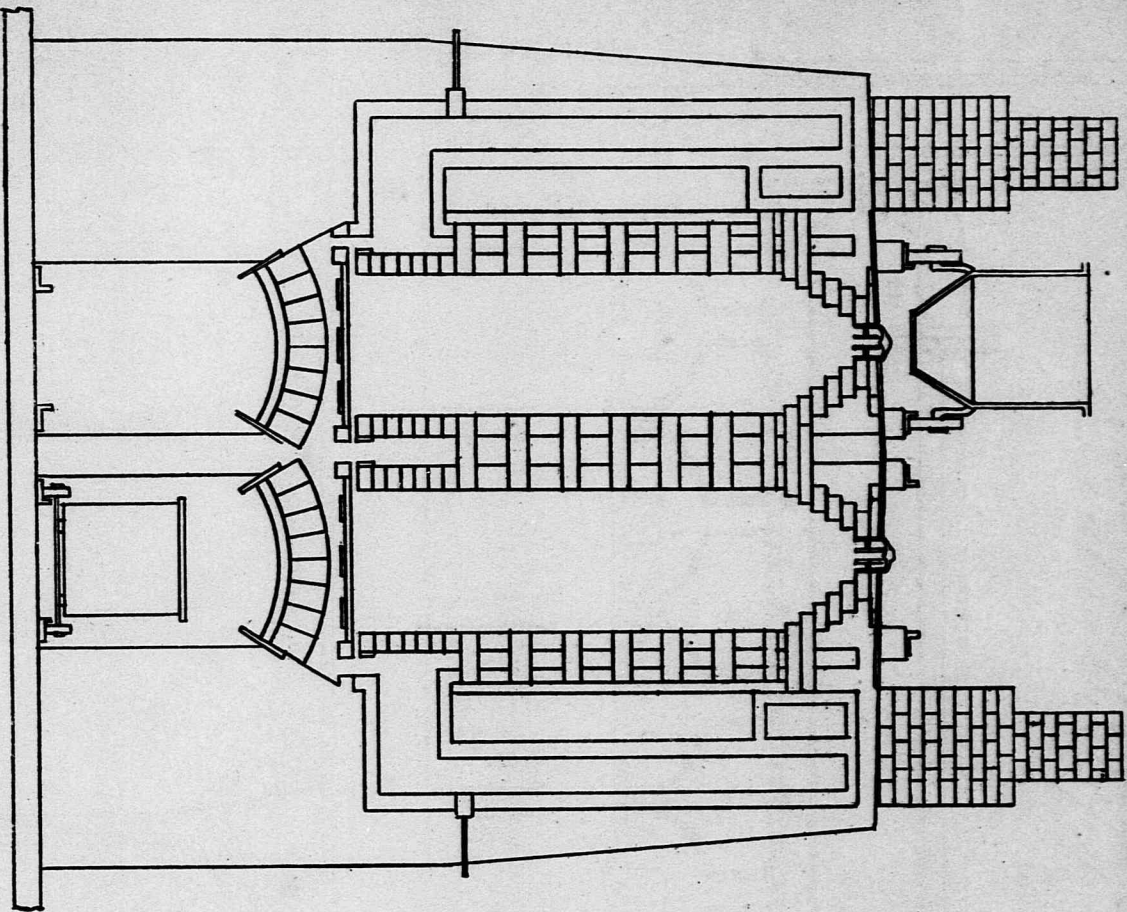
E. S. Land



Rich. Taylor



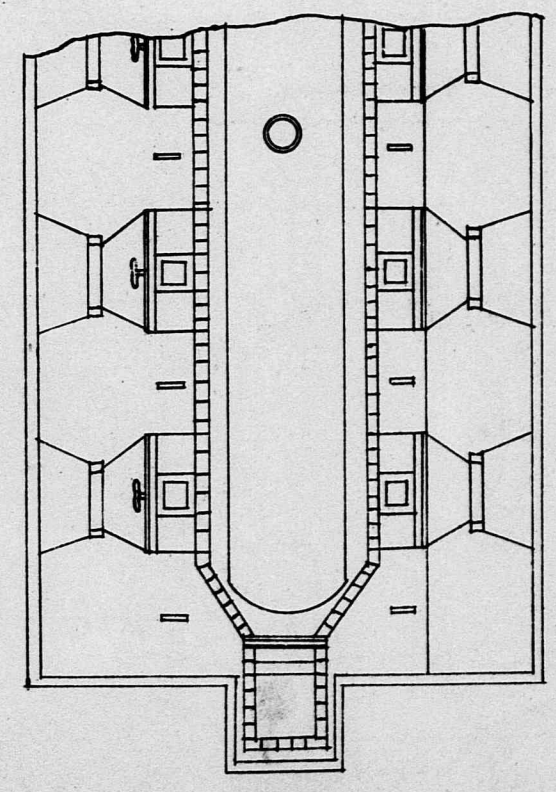
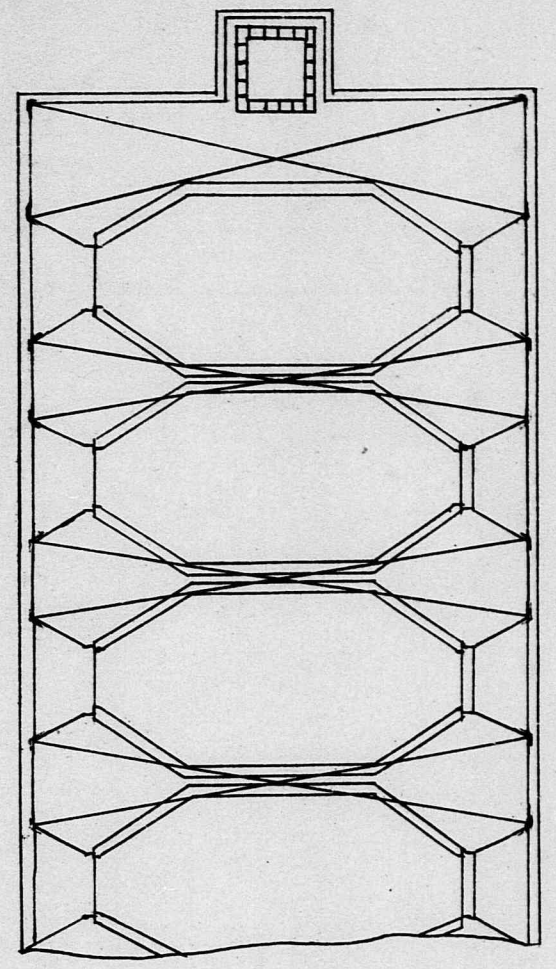
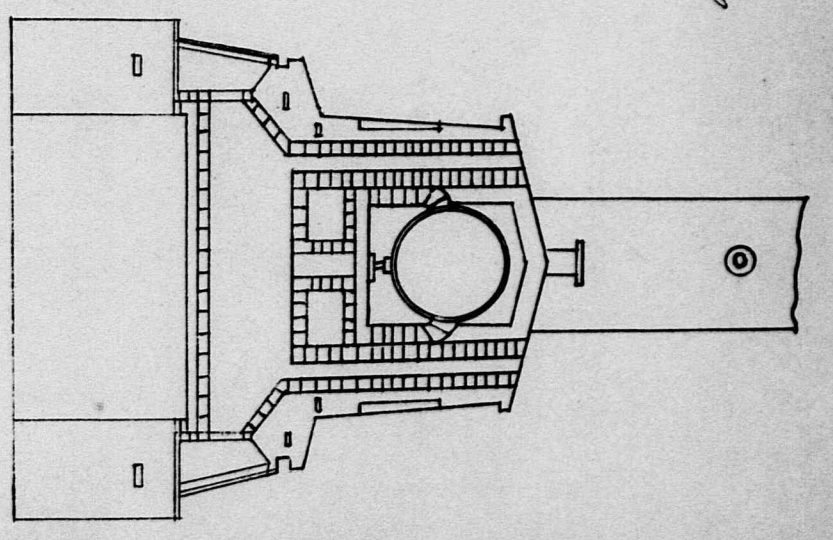
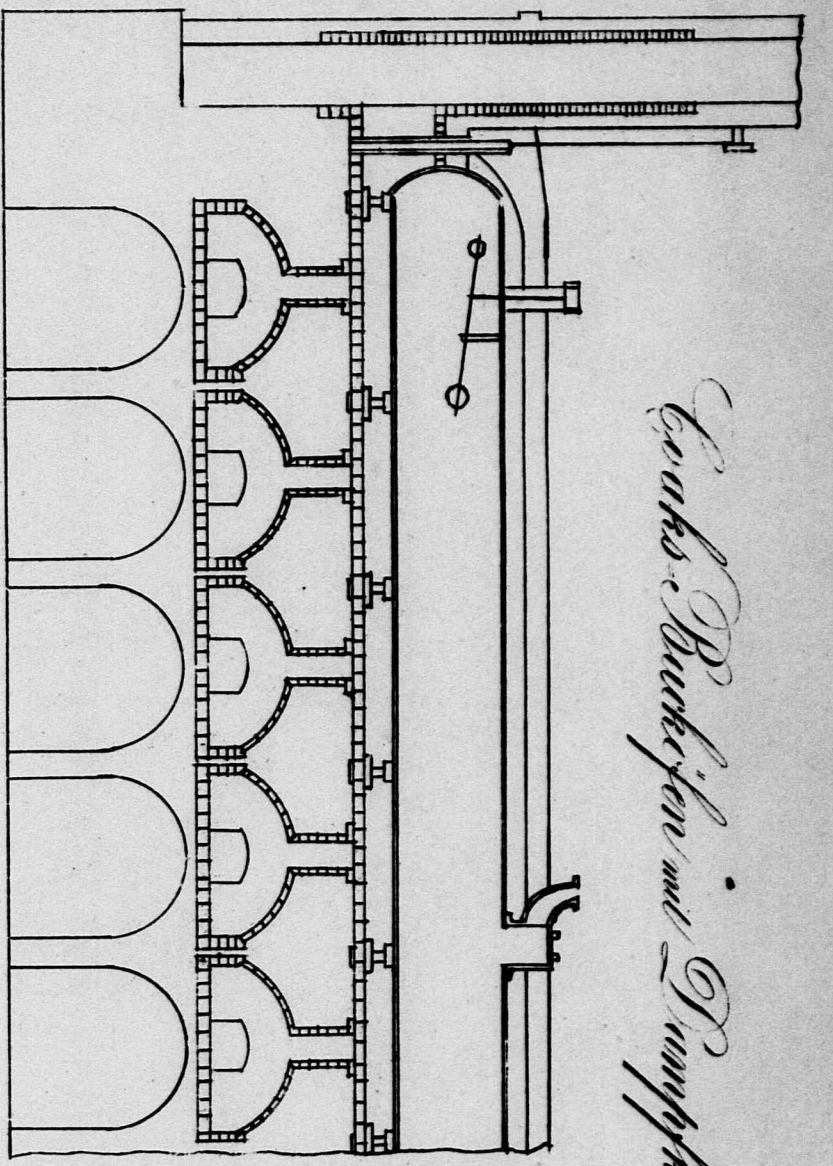
Rich. High



Саркофагъ и. Шулъбасъ.

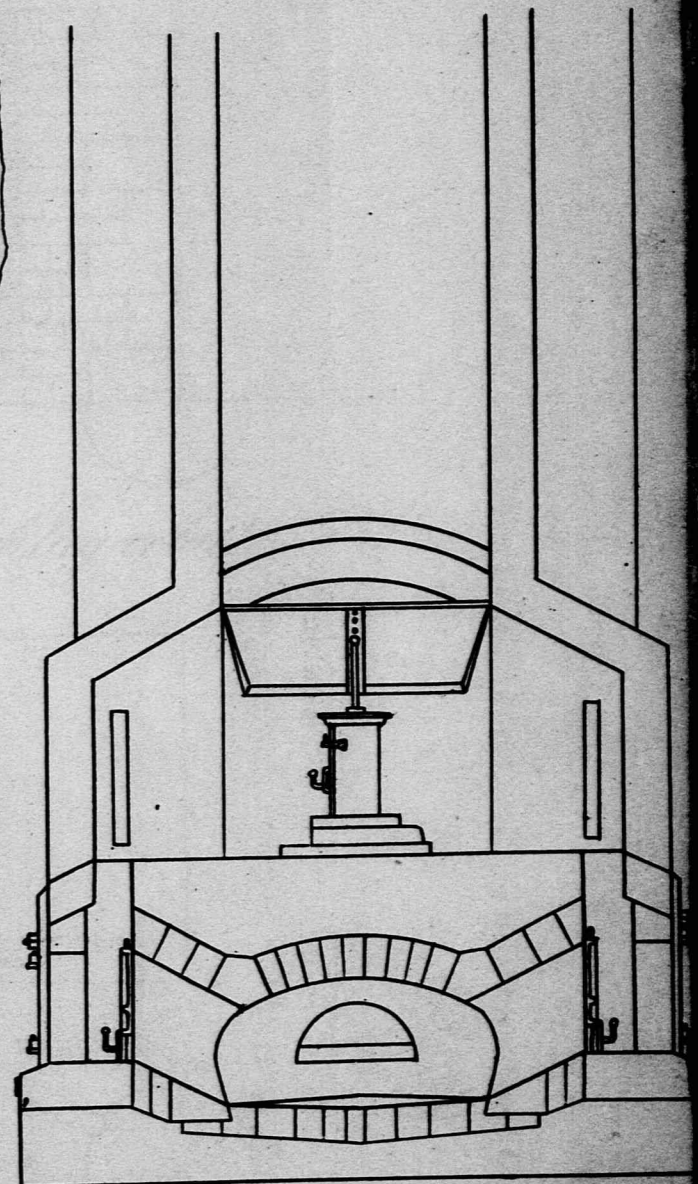
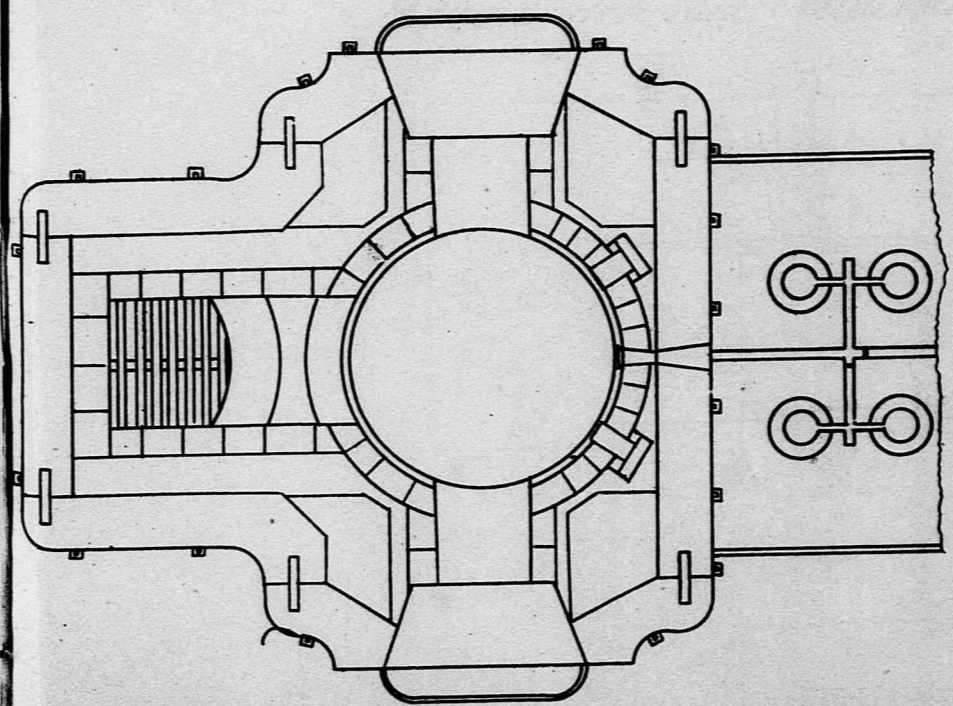
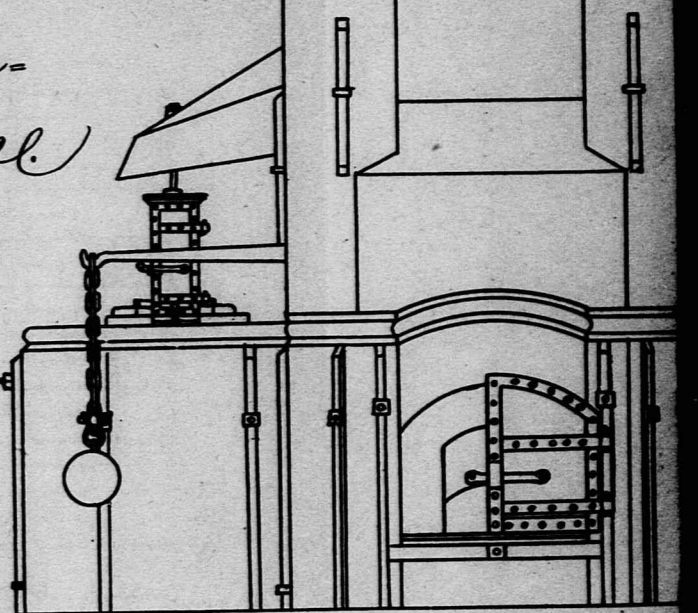
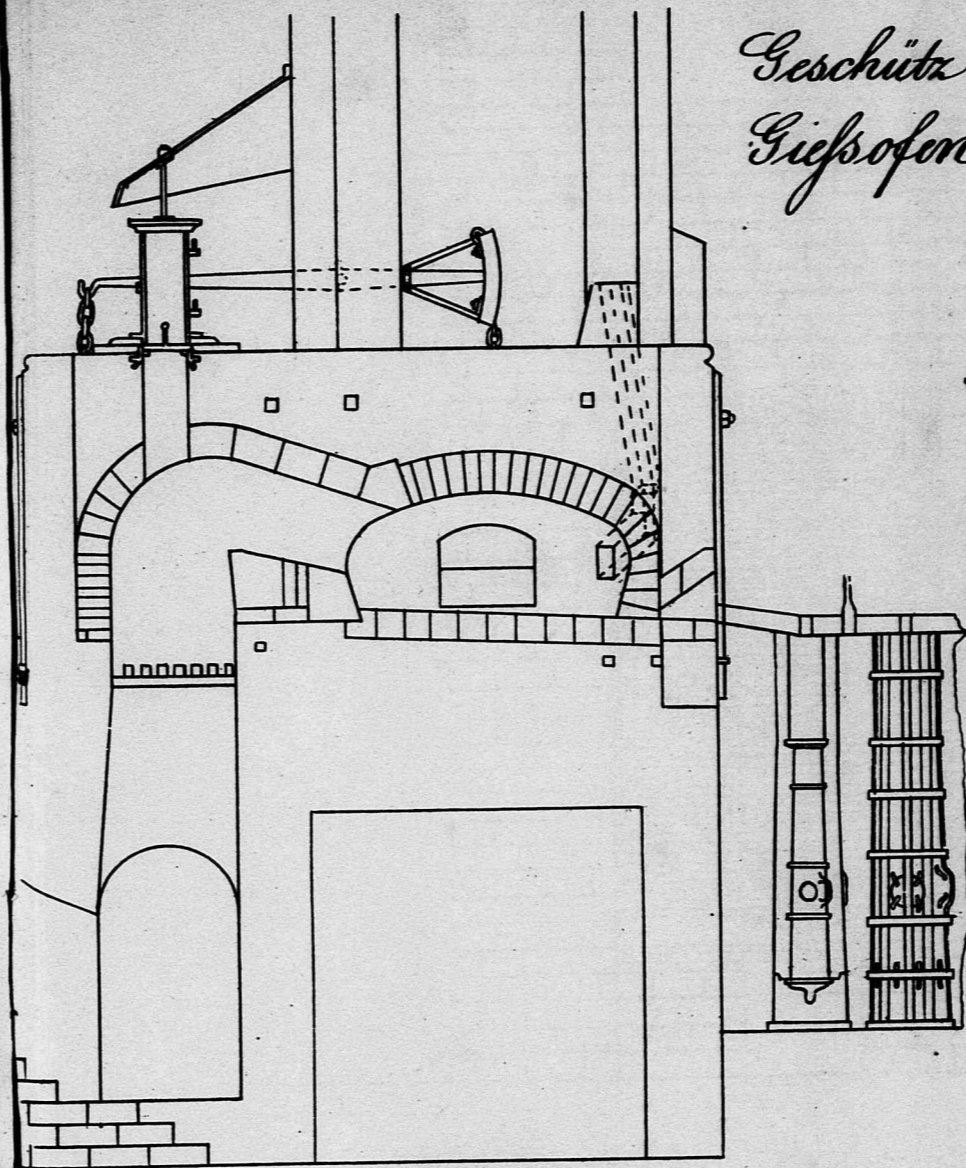
В. М. М. М.

Lehrbuch der Buchdruckerei mit Dampfdruck.

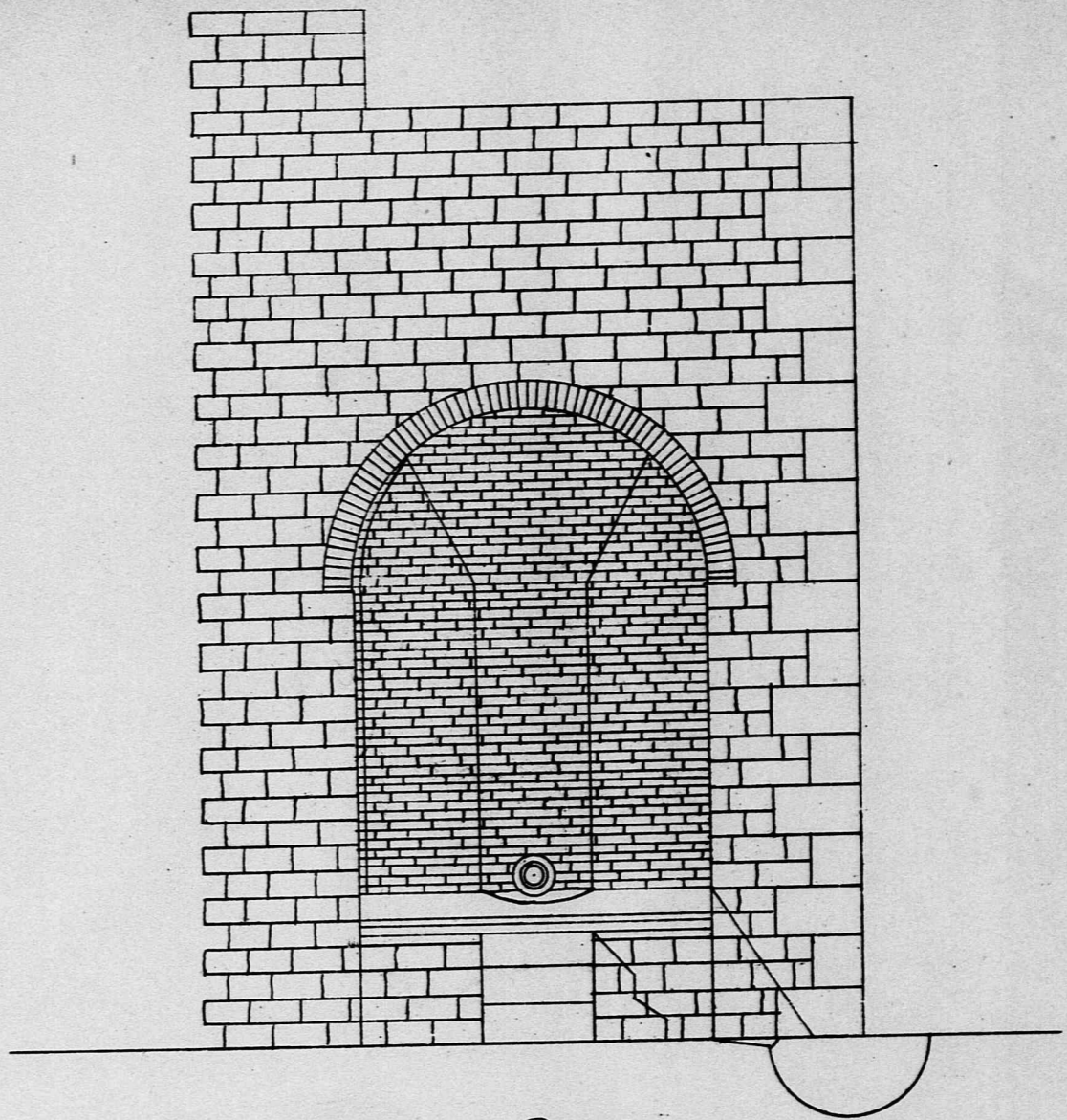


St. Müller

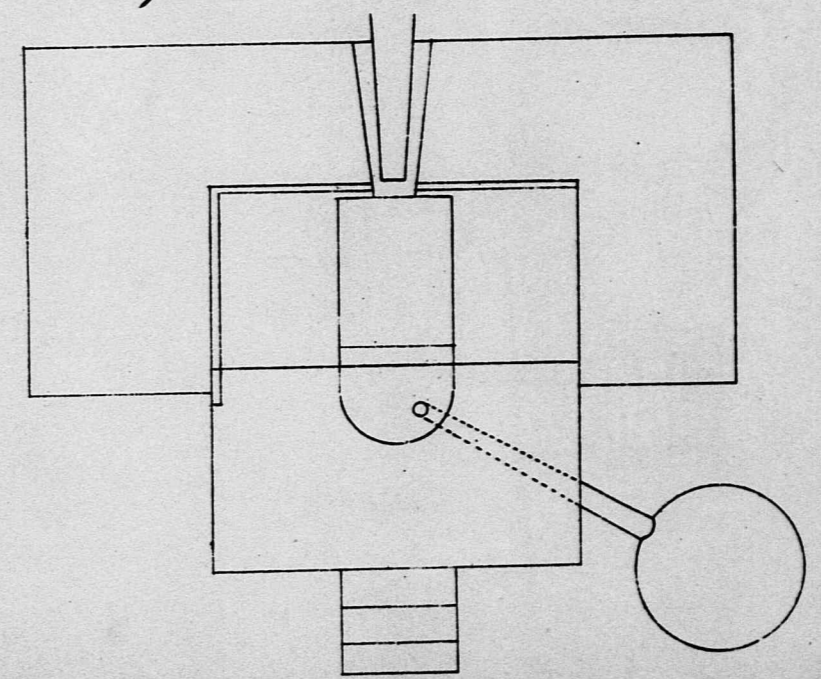
*Geschütz-
Gießofen.*



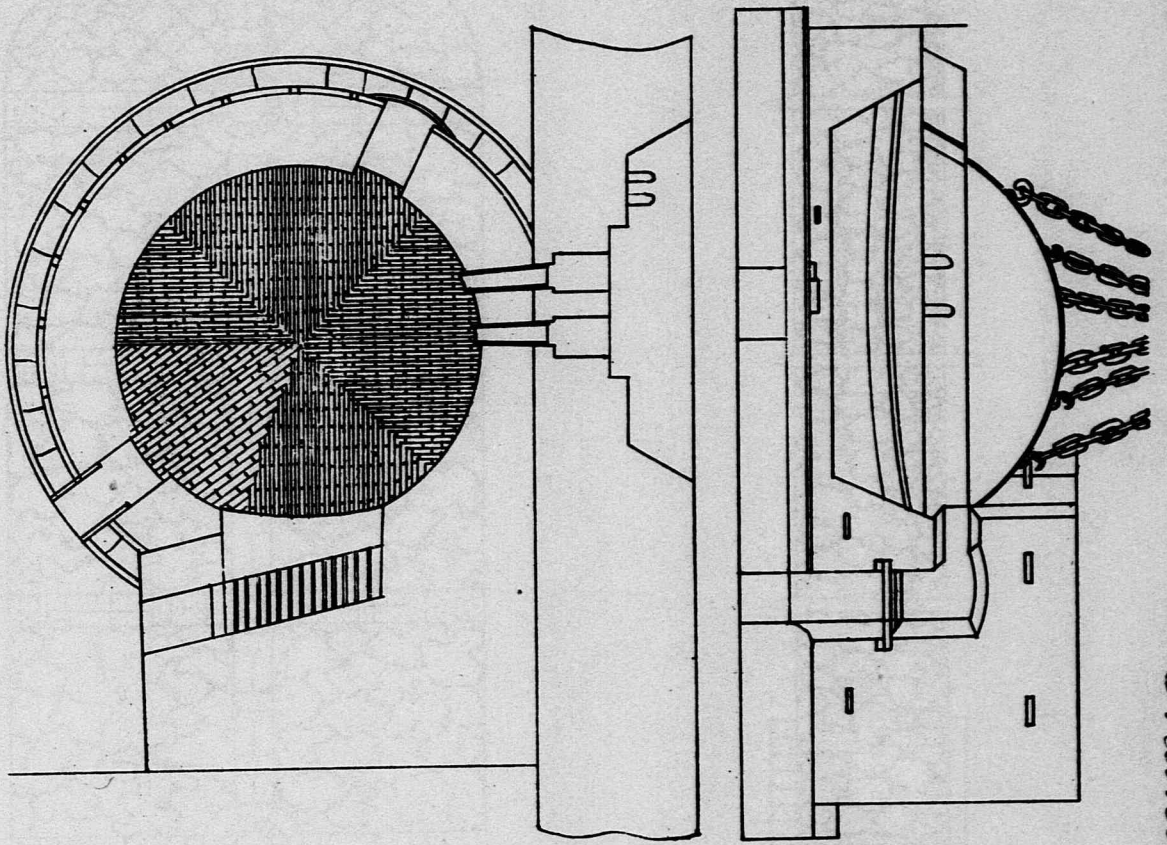
Carl Lohr



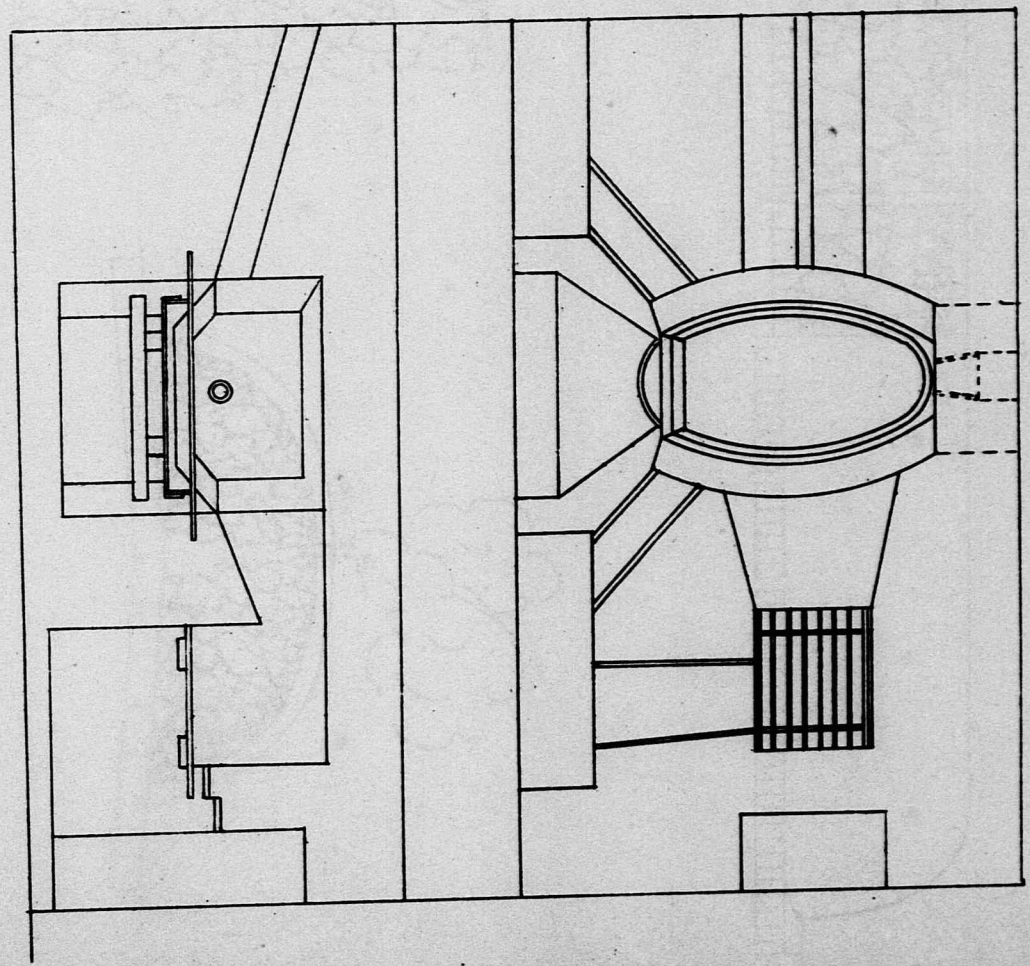
Krummofen zur Niederschlagarbeit



Fr. Ertler

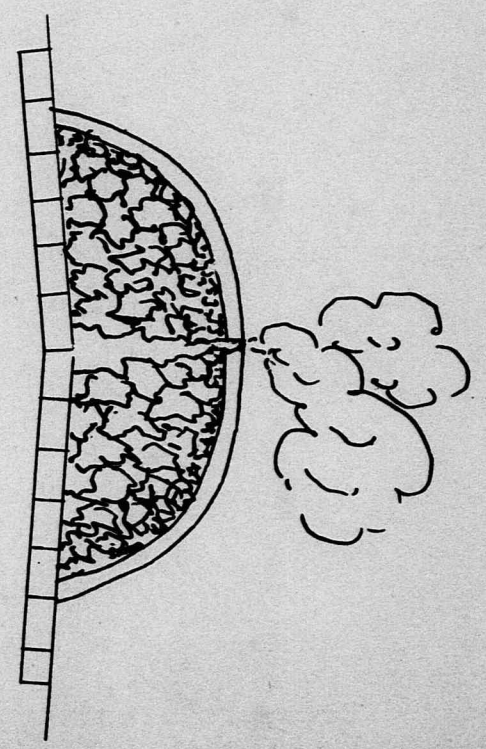
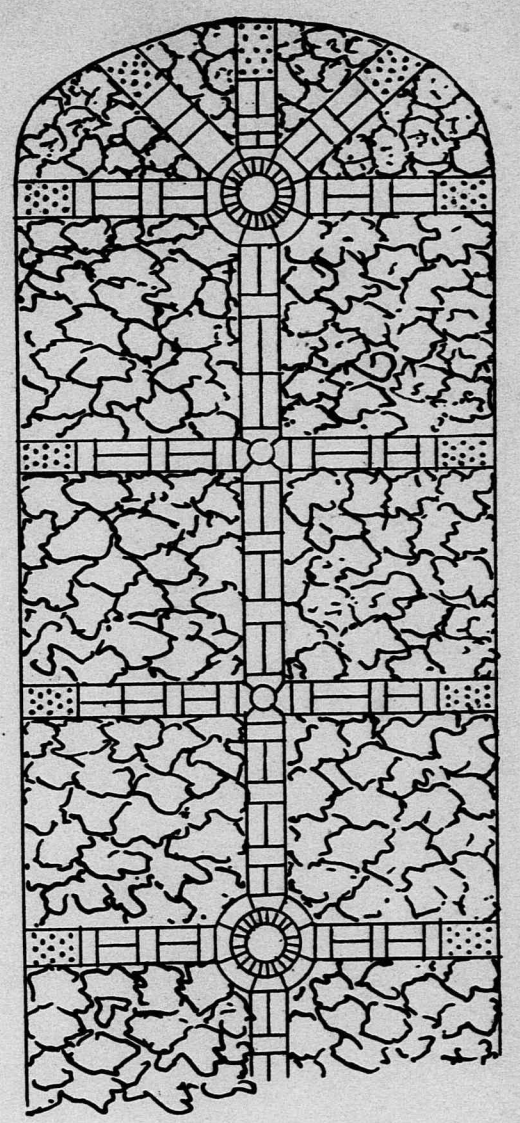
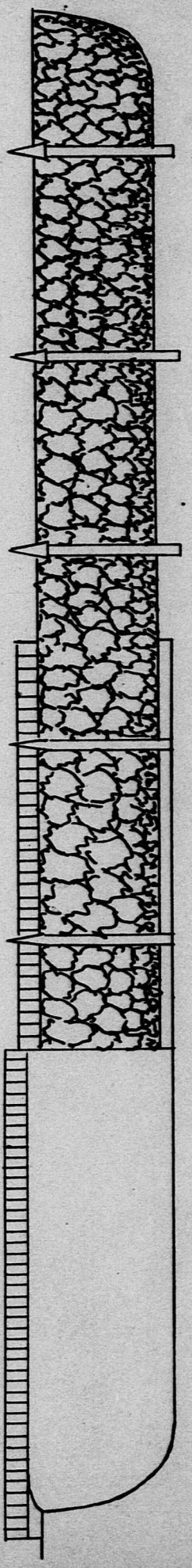


Smith's Patent

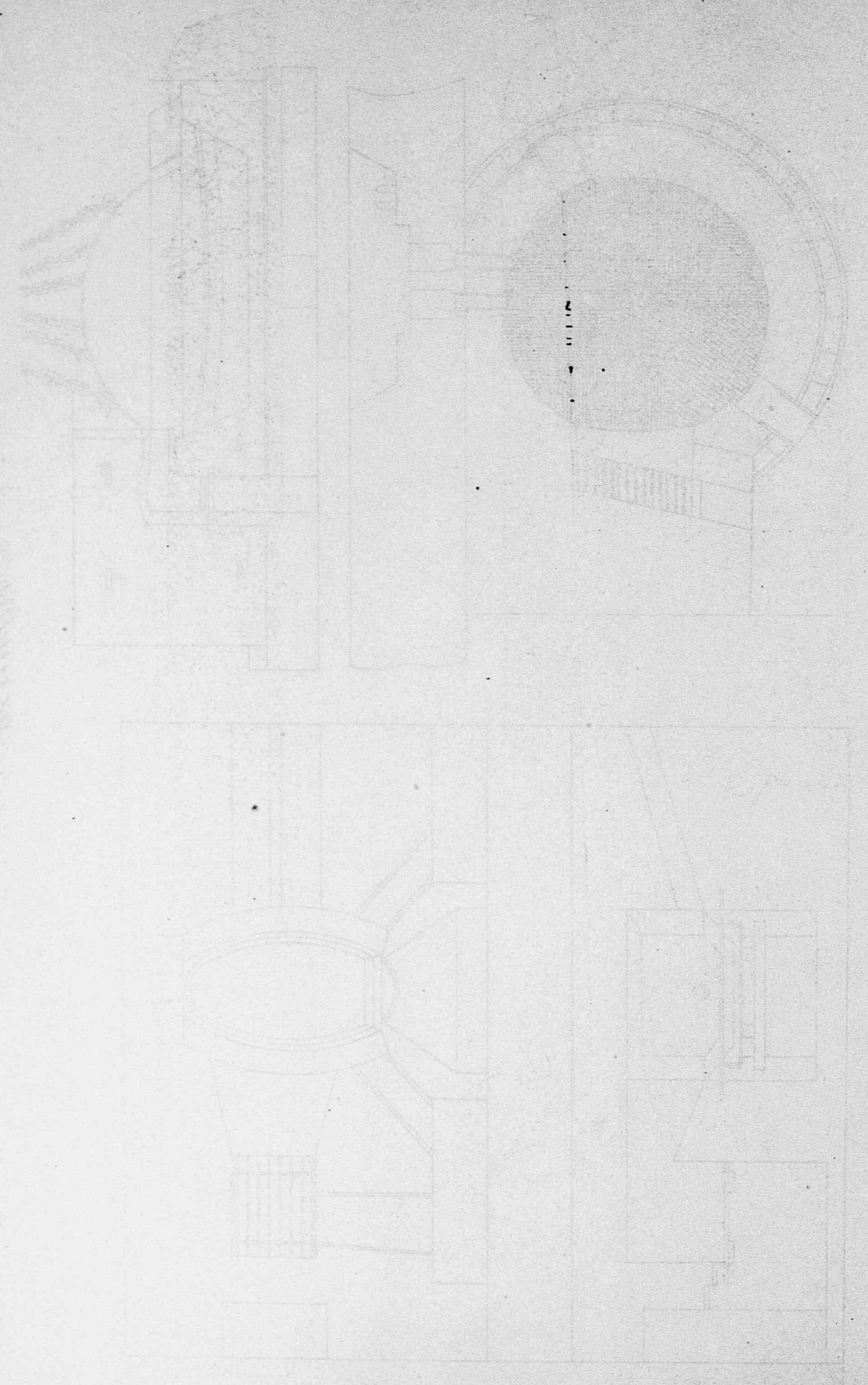


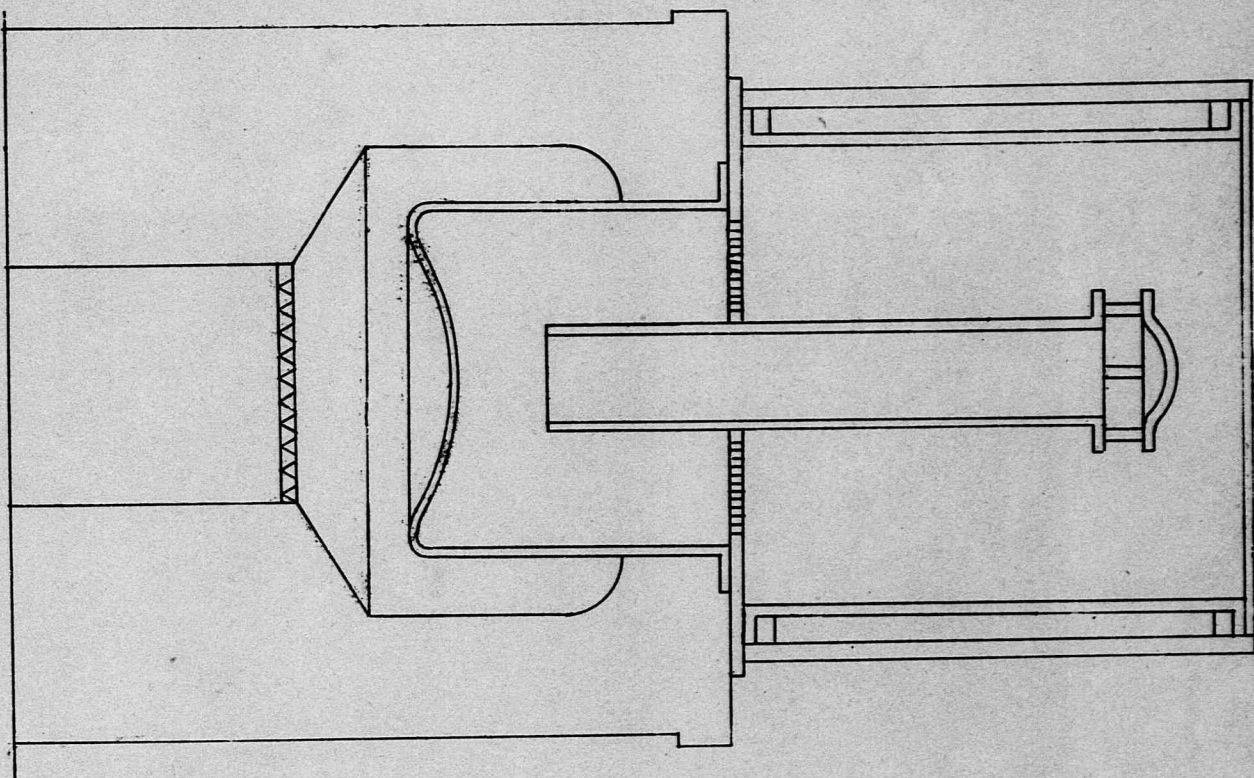
W. O. Davenport

Steinkohlen - Meiler . -

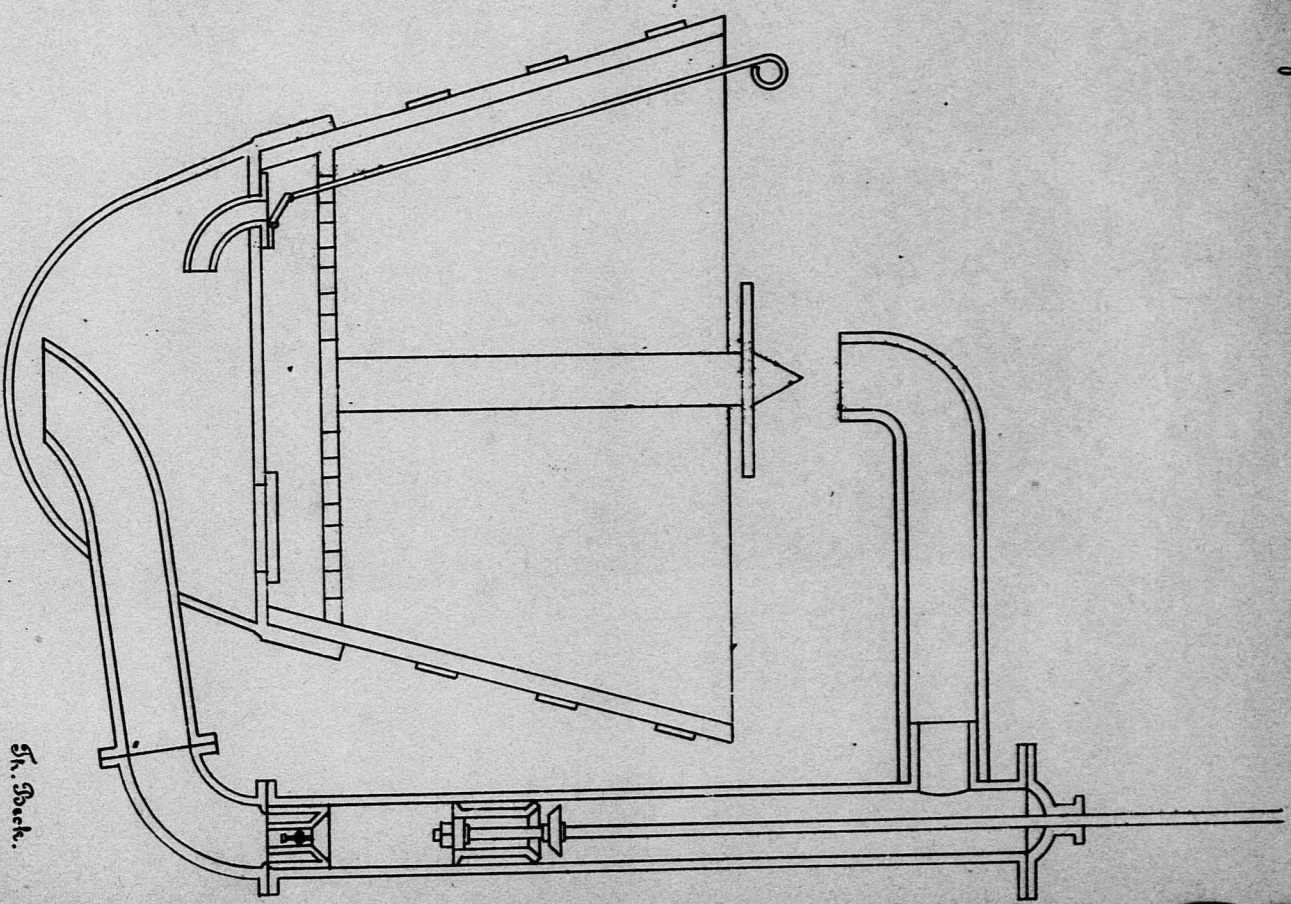


J. Sommer.

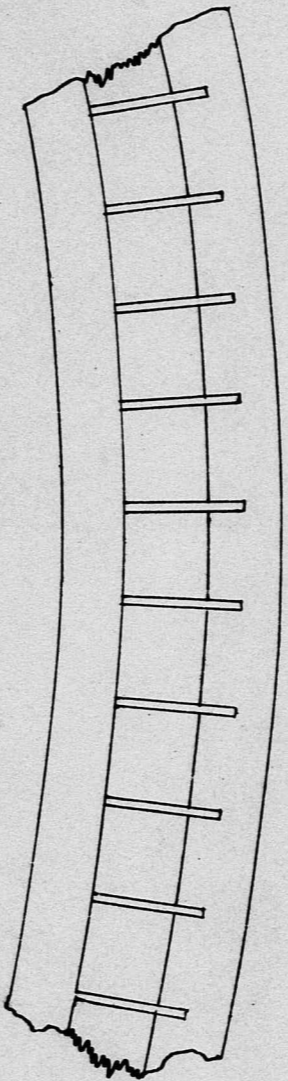
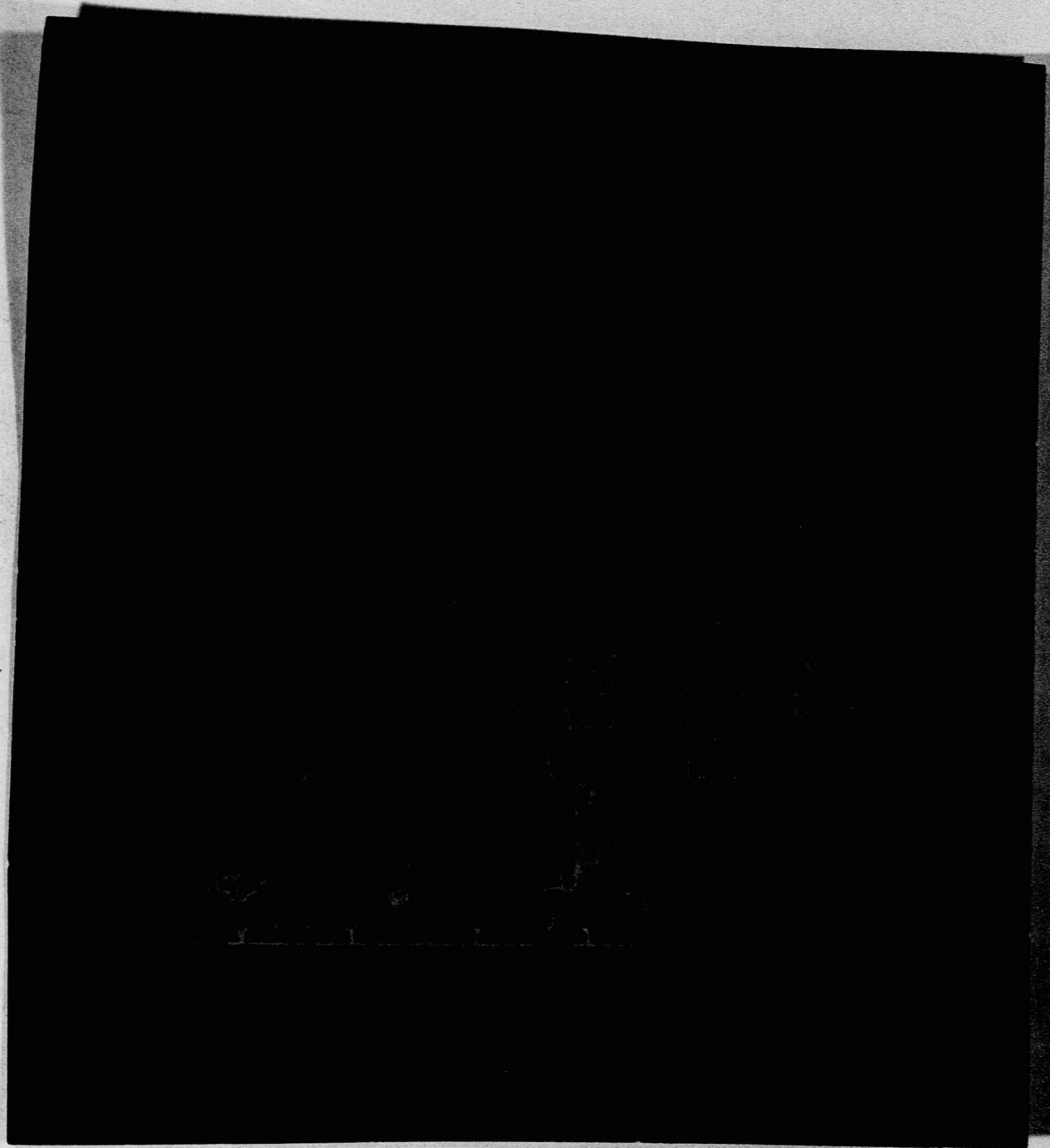




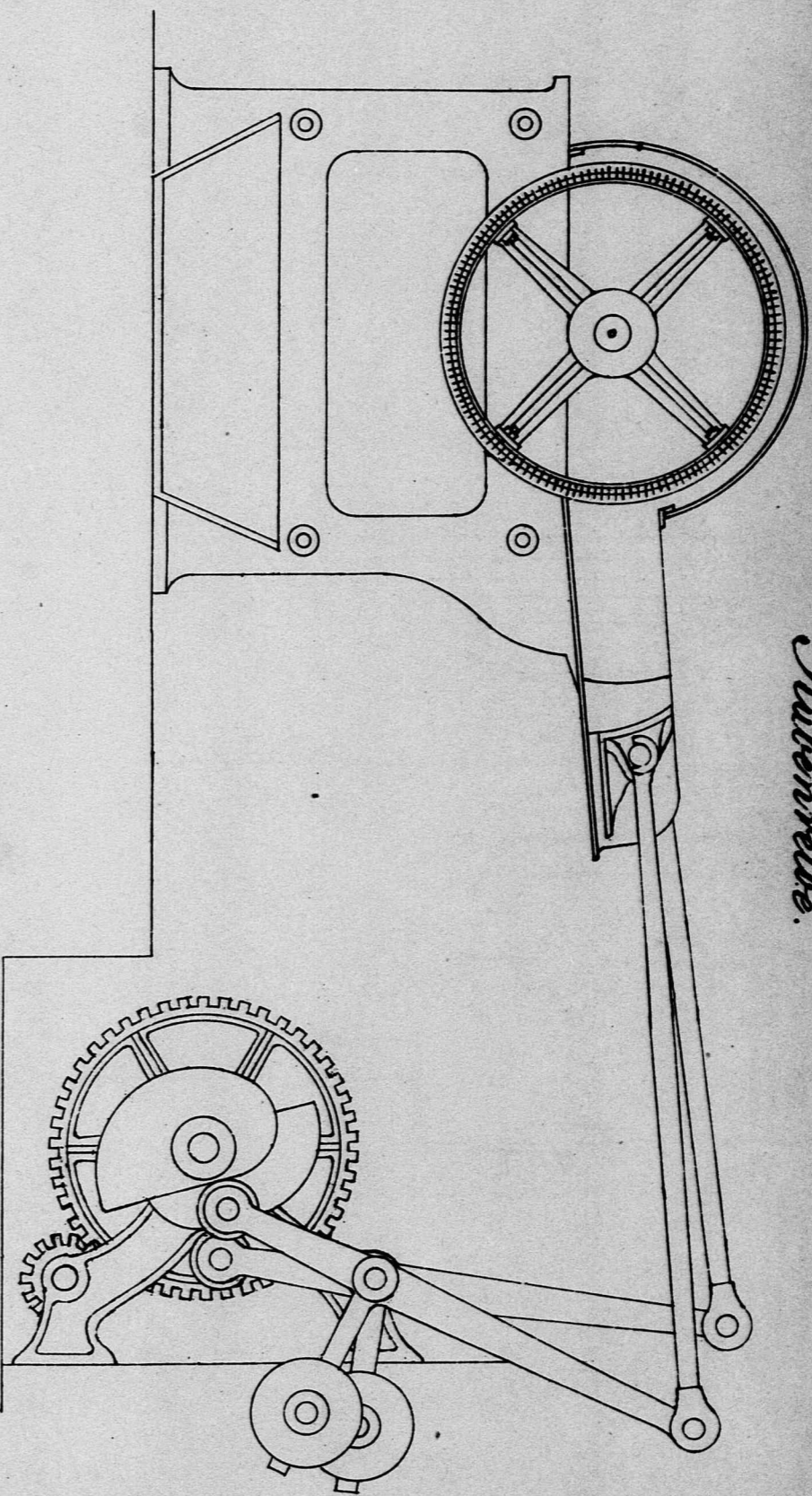
Bauch-Schapel.



St. Bank.

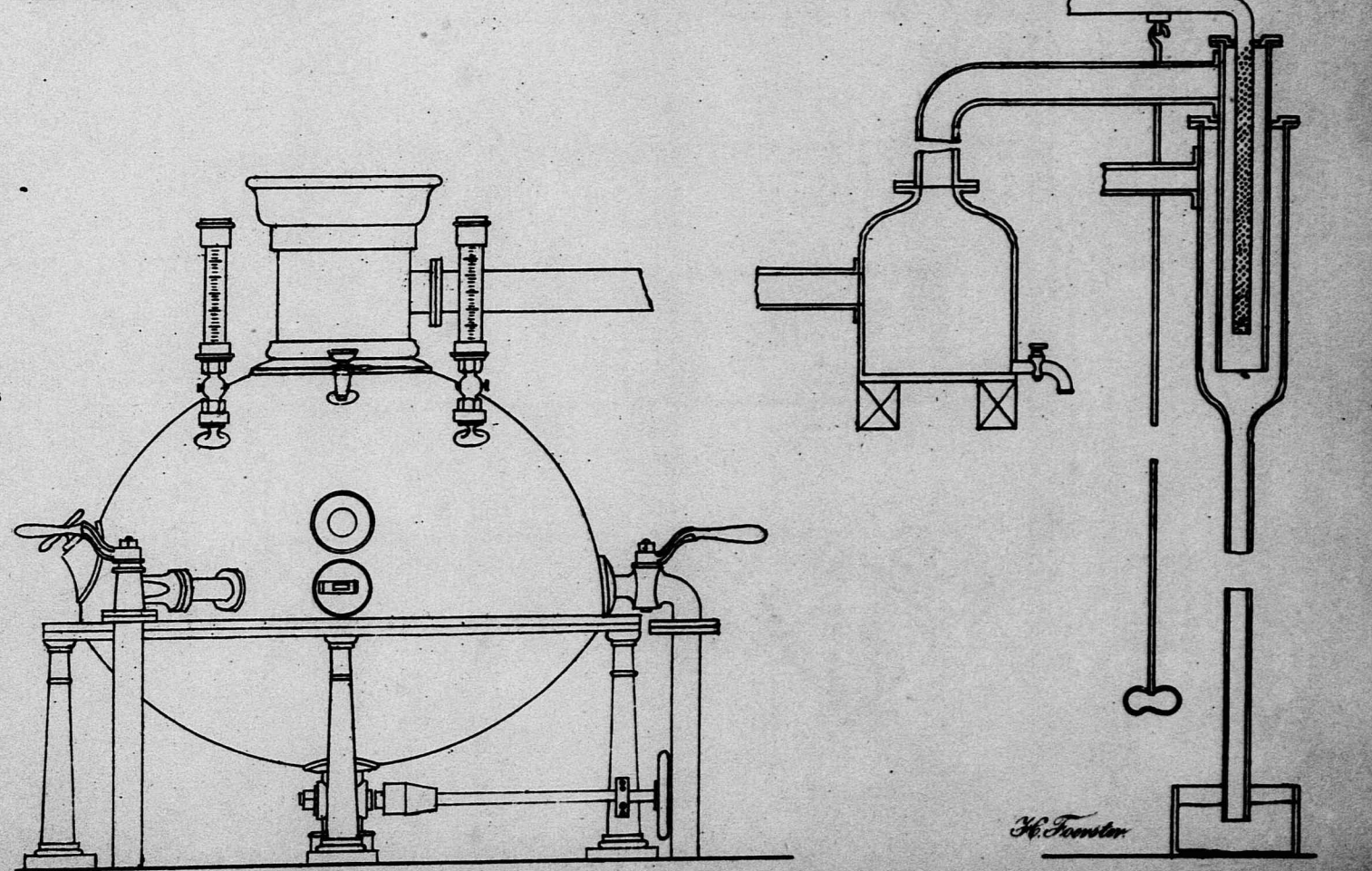
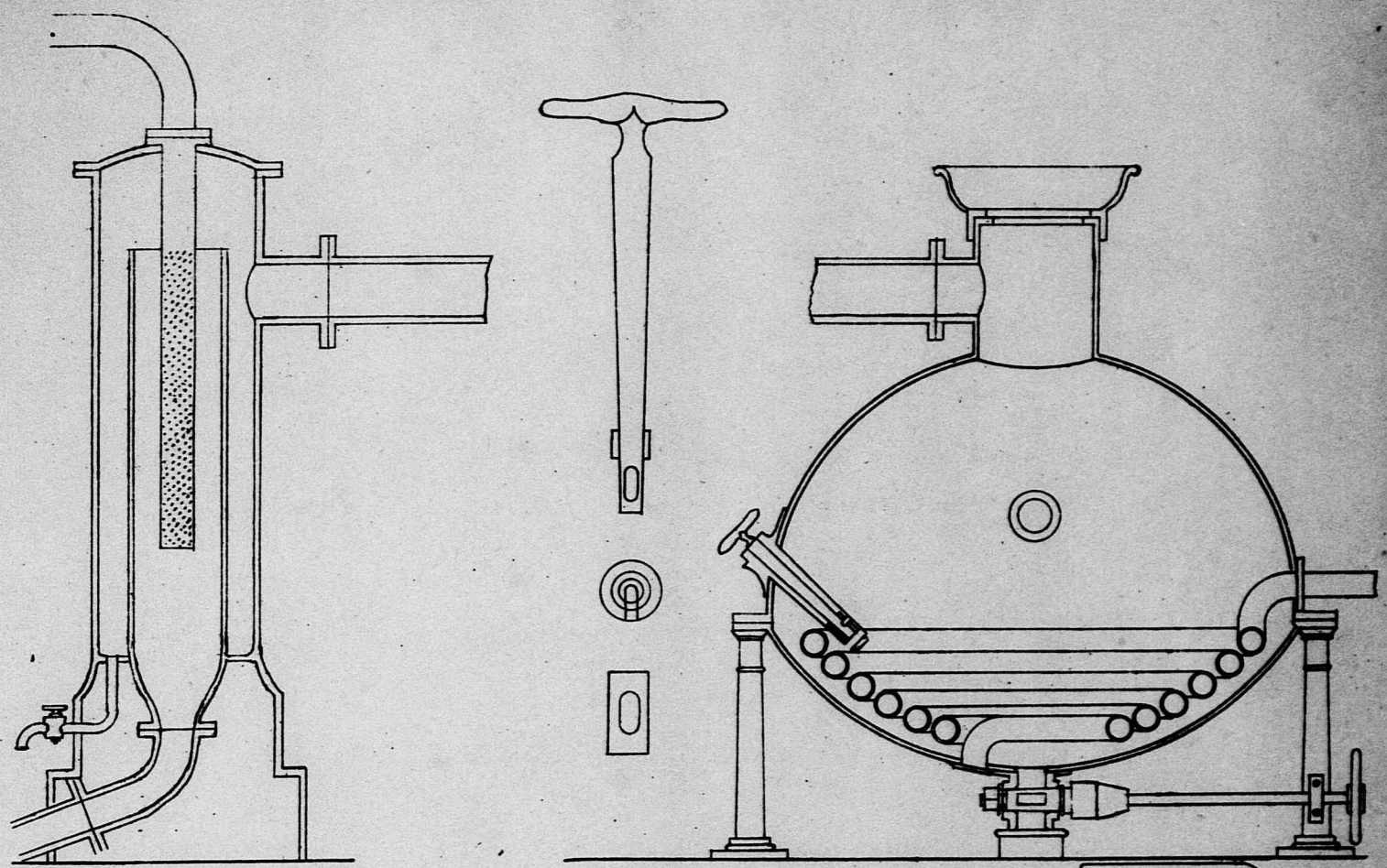


nat. Größe.

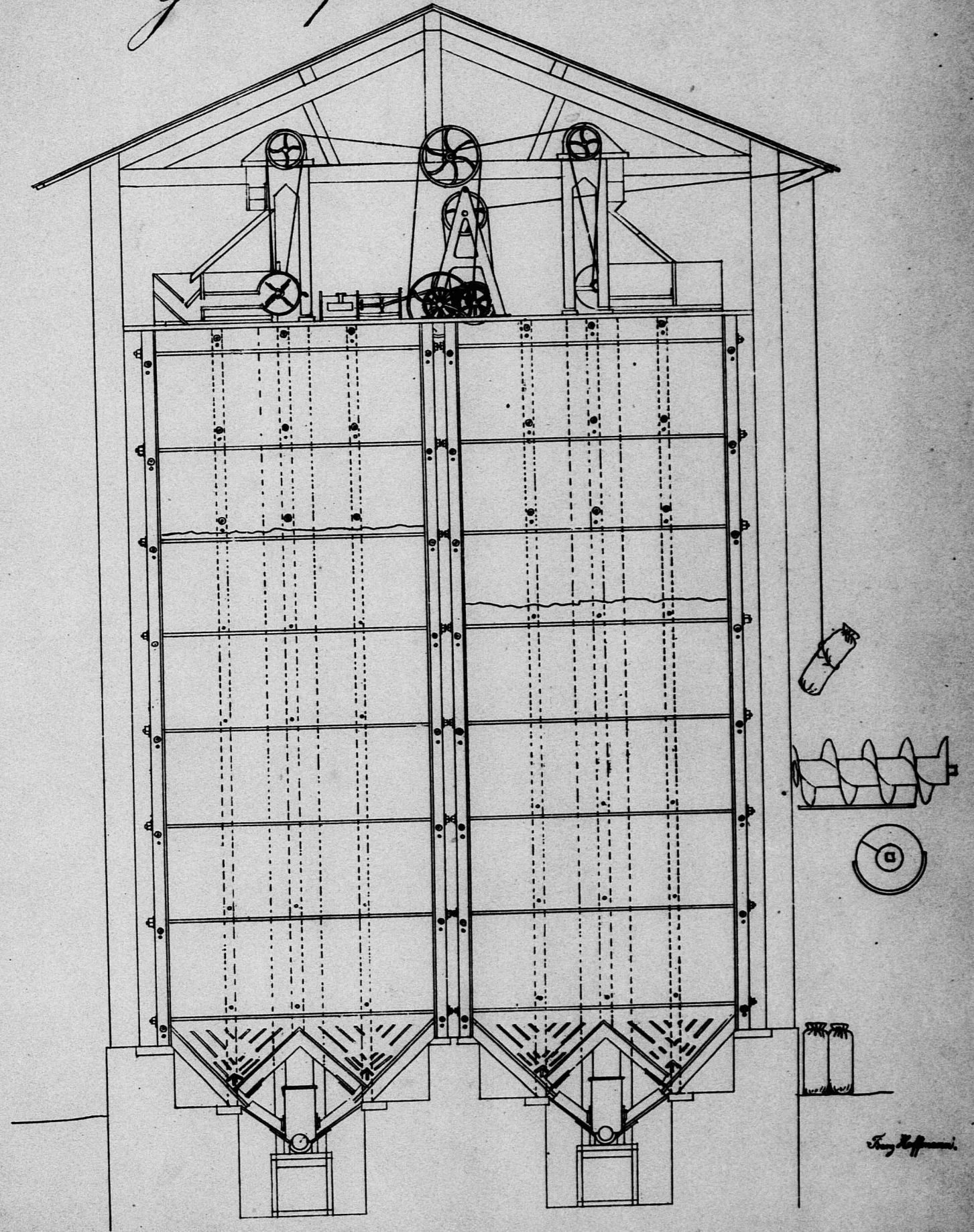


Rutenweide.

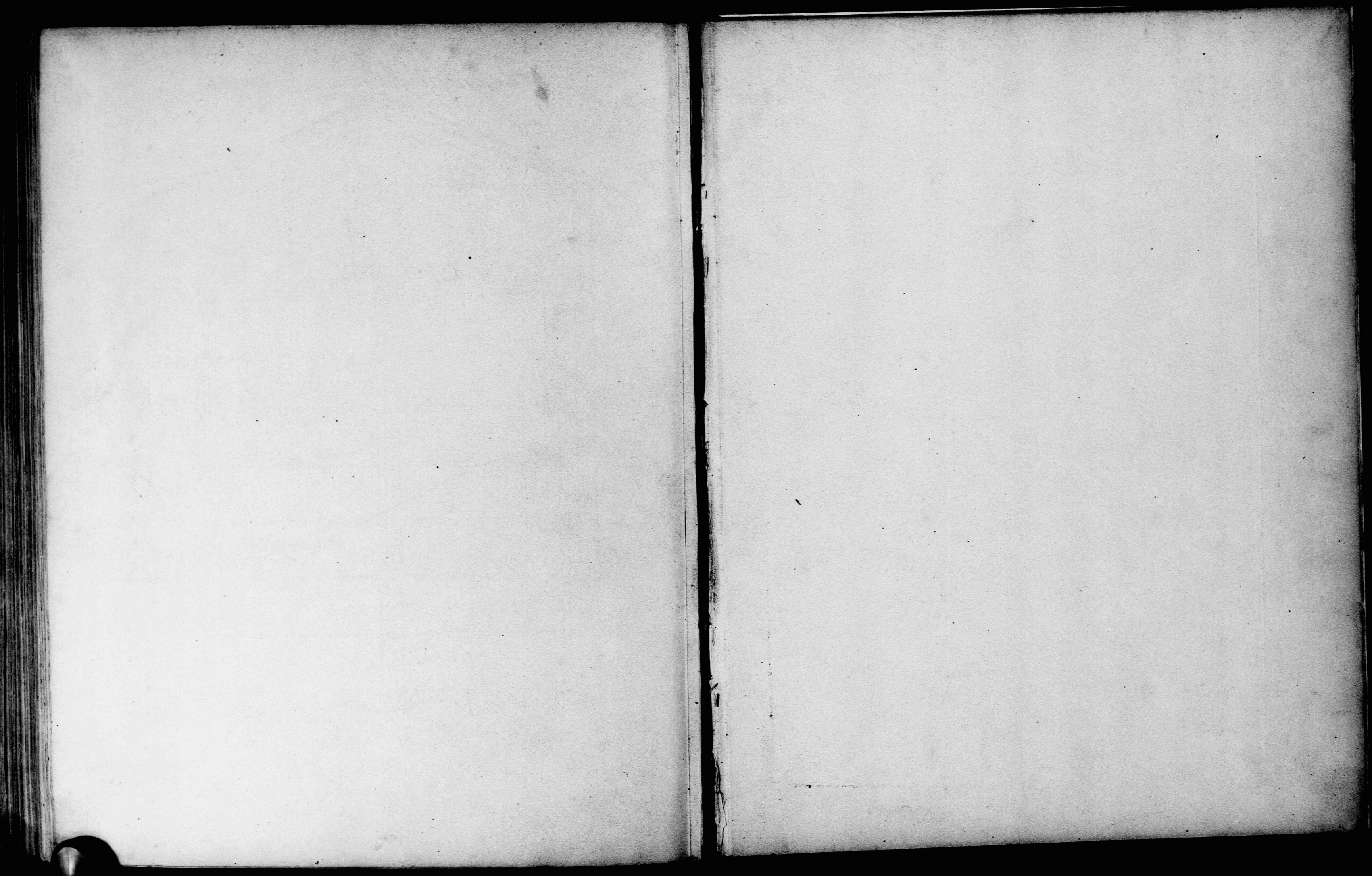
W. Müller

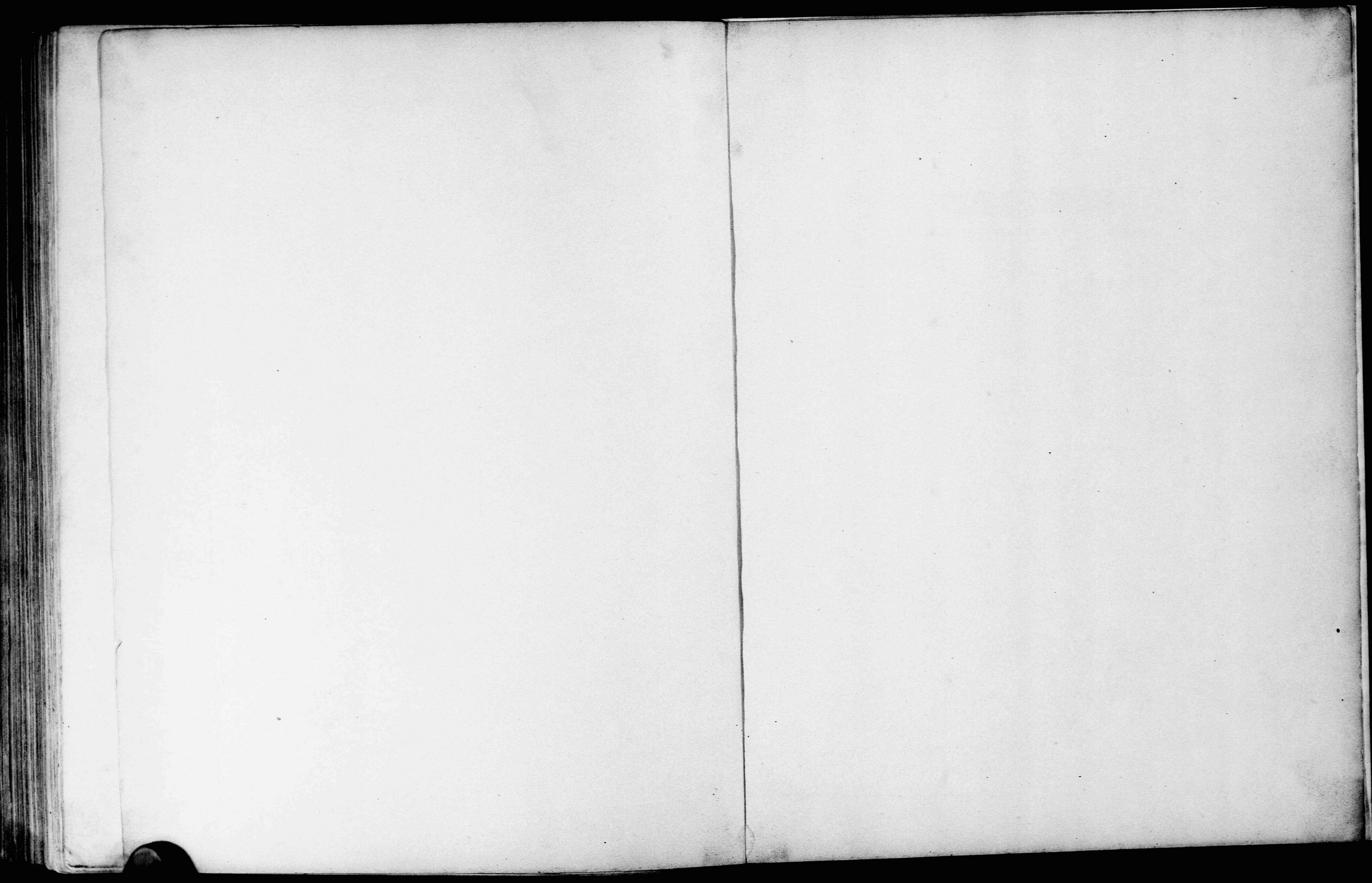


Getreidespeicher von Huart.



King & Co.





30 575023



N11< 44343262 090 UB Karlsruhe